



# Infinite Enterprise Portfolio

## Securely Connect Everyone, Everywhere

Rising complexity, distributed workforces, and the need to control costs are all top of mind for organizations as they continue to adapt to an unprecedented rate of change. The right solutions partner can make all the difference.

**Extreme's unique One Network, One Cloud, One Extreme approach** reduces risk and simplifies operations by enabling infinitely distributed, highly scalable networks that deliver both strategic advantage and consumer-centric experiences.

### Unique Architectural Approach

#### One Network Connects Everything

Wired, wireless, and SD-WAN devices connected by Extreme Fabric enable a unified, secure, and automated network as a single topology across campus, data center and branch.

#### One Cloud Manages Everything

Unified management of wired, wireless, SD-WAN, and IoT devices with choice of public (shared or private) cloud or ExtremeCloud Edge. Enhanced visibility, security, and control via AIOps, Digital Twin, location services, and more.

#### One Extreme Optimizes Everything

Universal licensing simplifies the license process while avoiding hidden costs. 100% in-sourced, certified global professional services speed time to value, mitigate outages, and help customers maximize their IT investment.

### Best-in-Class Hardware

#### Wireless

Indoor, outdoor, and external antenna Wi-Fi devices

Wi-Fi 6		Wi-Fi 6E	
AP302W	AP305C/CX	AP3000/X	
AP410C	AP460C	AP4000	AP5010
AP510C/CX		AP5050D/U	

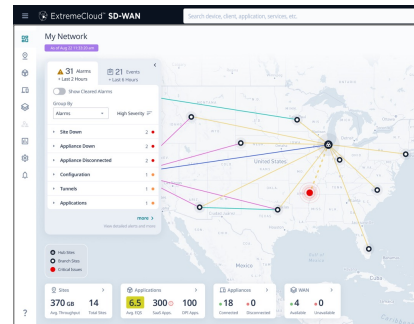
#### Wired

Edge, core, and aggregation switches

Edge	Aggregation/Core
5320	7520
5420	7720
5520	8520
5720	8720

#### SD-WAN

IPE Series Appliances up to 10G



# One Network



## Universal Wireless

Industry-leading 6 Ghz Wi-Fi technology with built-in AIOps troubleshooting, guest, IoT, and location services across a range of deployment environments. Organizations can easily adopt new technologies and/or use cases through a simple software change avoiding hardware lock-in and protecting their investment.



## Extreme Fabric

Industry-leading, highly scalable end-to end fabric solution deployed in thousands of customer networks. Unifies, automates and secures the network from data center to campus to branch, across wired, wireless and SD-WAN environments.



## Universal Wired

Broad range of high-performance, multi-rate switches and routers with integrated fabric and advanced PoE to securely address your edge, core and aggregation needs. A choice of operating systems allows organizations to easily repurpose and redeploy their network hardware.

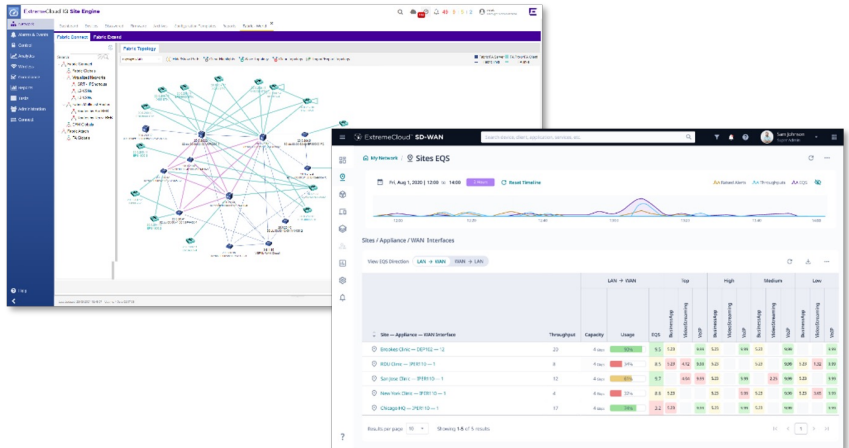


## ExtremeCloud SD-WAN

SD-WAN connects users, data, and applications securely and at scale. Advanced application performance management enables the best possible performance for the lowest cost.

# One Cloud

- Unified management experience for wireless, wired, SD-WAN and IoT
- Choice of public cloud (shared or private) or ExtremeCloud Edge
- 3rd party device management, (e.g., Cisco, Aruba, Juniper) as well as management of Extreme non-cloud native devices
- Flexible, universal licensing for enterprise services, AIOps, Digital Twin, security, and more



# One Extreme

Extreme creates the simplest and most complete experiences for Extreme customers so that in turn, they can deliver consumer centric experiences to their end users. Simple, universal licensing with a single license per device, portable and poolable across wired and wireless platforms, offers business predictability without hidden costs. Extreme enhanced services help customers mitigate downtime, while optimizing and modernizing their IT environment.

# Summary

Extreme Networks is driven to improve its customers' businesses. Connectivity is only a starting point. Extreme's portfolio of products, solutions, and services helps customers increase the capability and value of their network as a strategic asset. A range of wireless, wired, and SD-WAN devices, a unified, automated and secure fabric, and unified management provide 1 Network managed as 1 Cloud. 1 Extreme provides additional programs that enable customer success and lifetime value.