

Extreme Platform ONE™



Highlights

- Conversational, multimodal, and agentic AI reduce manual effort by up to 90% without sacrificing human expertise and control.
- Service Agent provides troubleshooting guidance and resolution advice, collects evidence and can open a GTAC case.
- Third-Party Management Engine (TPME) enables IT to discover, monitor, and manage Extreme and non-Extreme devices from a single interface.
- Simplified workflows turn eight clicks into one across networking, security, inventory lifecycle management, procurement and compliance.
- Multi-domain, multi-layer views make the network easier to learn and manage.
- Complete zero trust access security and Extreme Fabric visualization and configuration enable end-to-end network and security automation.
- Device, inventory, subscription, and contract management workflows save time on procurement, compliance, administration, and other efforts.
- Powerful administration tools accelerate time to value and reduce time spent on management.
- An inclusive licensing program with top-rated 24/7 human technical support, and updates, makes it simpler to understand and manage total cost of ownership.

Extreme Platform ONE: Secure Connectivity Made Simple

Networking and security are becoming more complex, and that complexity is slowing growth and innovation. Extreme Platform ONE™ makes secure connectivity simple. The industry's first all-in-one networking with integrated security, technical support, and conversational, multimodal, and agentic AI helps customers improve efficiency, security, and productivity while reducing total cost of ownership.

The all-in-one platform approach of Extreme Platform ONE enables customers to:

- **Reduce manual effort by up to 90%** with conversational, multimodal, and agentic AI for networking, security, procurement, compliance, and other workflows.
- **Secure and scale the network in minutes** with complete, integrated zero trust access security and zero-touch secure network fabric.
- **Turn eight clicks into one** with multi-domain, multi-layer views, simplified workflows, and personalized experiences in a composable workspace.
- **Reduce total cost of ownership** with a subscription program that includes technology updates and 100% in-sourced, industry-recognized support.

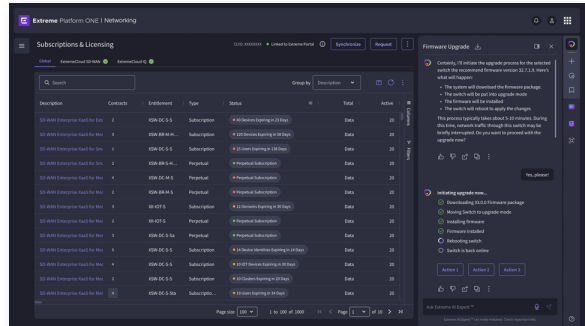
Key Capabilities and Benefits

AI for Networking: Automated, Human-Centered AI

AI has set high expectations for productivity. However, many AI solutions are siloed, reducing their value, potential, and applicability. Extreme Platform ONE's conversational, multimodal, and agentic AI capabilities help customers reduce manual effort by up to 90%. Instant answers, custom, query-based dashboards, and agentic AI workflow automation work together to complement and augment human expertise and efficiency for networking, security, procurement, compliance, and other complex workflows.

AI Expert accelerates any workflow with instant answers across thousands of topics

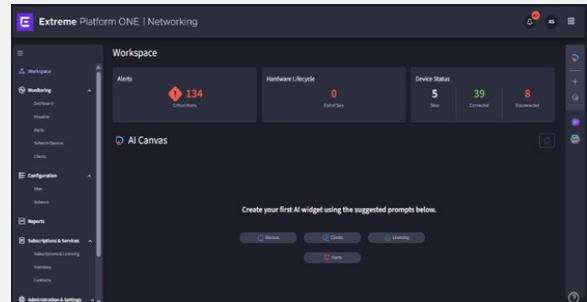
- A multilingual, conversational AI tool available 24/7 provides instant responses to questions across thousands of topics.
- Think It Through feature leverages advanced reasoning to deliver a conversational AI response that offers perspective.
- Follow-up questions enable faster exploration.
- Public and proprietary data sources, such as technical articles, best-practices, and network data, enrich and contextualize answers.
- Conversation history makes it simple to return to a previous conversation, even months later.
- Conversation privacy helps ensure a private opportunity to get assistance or explore questions.



Instant response across thousands of topics

AI Canvas enables data exploration and trend monitoring with real-time, custom dashboards

- Natural language data visualization simplifies data exploration and custom reporting and analysis.
- Custom widgets, such as charts, graphs, and tables, improve insights.
- Easy export of widgets to .PDF or other formats make sharing insights simple and quick.
- Real-time, custom dashboards of multiple widgets make it simpler to monitor changes and trends over time.

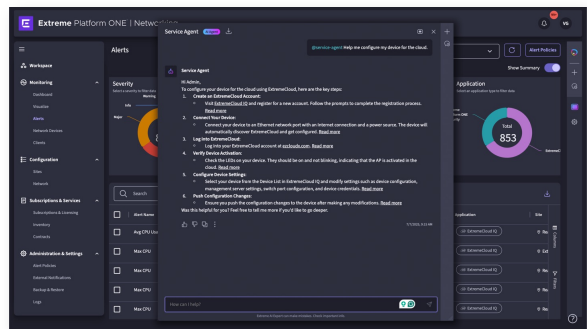


Real-time, query-based dashboards in minutes

Service Agent, powered by human expertise, improves efficiency

- Service Agent, a smart, 24/7 point of contact, helps accelerate issue diagnosis and troubleshooting, reducing time to resolution.
- Streamlined evidence collection saves time with instant access to relevant logs and data.
- Efficient case creation and escalation enable a seamless hand-off to Extreme-badged, Global Technical Assistance certified experts.*

Additional AI Agents will be available in future releases



Reduce time to resolution by up to 98%

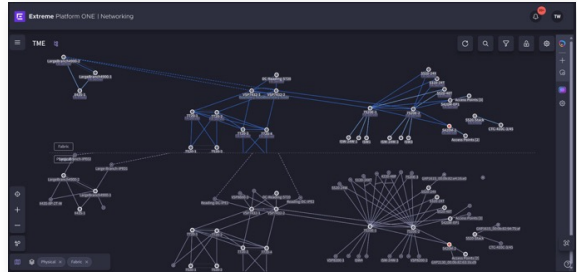
*Case creation features are available to ExtremeWorks customers only.

Zero Touch, Zero Trust Networking

As security needs continue to evolve, organizations are facing challenges keeping pace. A lack of integration between networking and security increases complexity and cost. Extreme Platform ONE provides a set of built-in and pre-integrated security capabilities to simplify the delivery of secure connectivity, anywhere. Extreme Fabric, enhanced Wi-Fi security, and role-based access for Extreme Platform ONE are all included in a standard Extreme Platform ONE Networking subscription. Single-policy, integrated, and universal ZTNA is available through an additional Extreme Platform ONE Security subscription. These capabilities work in tandem to accelerate and scale zero trust. Extreme Platform ONE's complete, zero trust access security makes it simpler and safer for customers to extend services to anyone, reducing risk, downtime, and manual effort all at the same time.

Extreme Fabric unifies, automates, and secures the network across campus, data center and branch

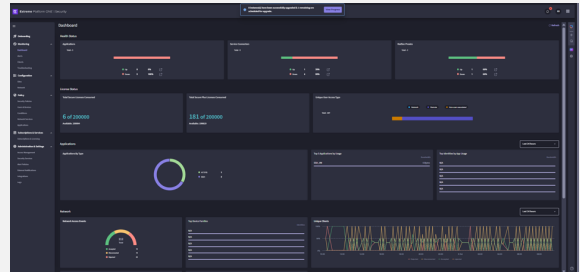
- Cloud visualization and configuration of Fabric make it simpler to monitor, configure, and troubleshoot a fabric network and its services from the cloud.
- Sub-second convergence helps enable a zero-downtime architecture, reducing cost and risk.
- Automated macro- and microsegmentation improve network security and simplify compliance.
- Stealth topology hides the core network from IP-based scanning and bad actors.
- Just-in-time services reduce the risk of back-door network access, scaling down unused services.
- Integration with Extreme Platform ONE Security leverages Fabric to scale zero trust access policy.



Automate, secure, and scale with Extreme Fabric

Extreme Platform ONE Security: Complete, identity-centric access security simplifies and scales zero trust for campus, branch, and remote work*

- ExtremeCloud Universal ZTNA is integrated with Extreme Platform ONE. Shared workflows, alerts, and license views further simplify security management.
- Unified cloud network access control (NAC) and zero trust network access (ZTNA) secure networks, applications, and devices with one policy engine, reducing touchpoints and time spent.
- Guided setup and pre-integration with leading identity provider (IdP) vendors, such as Okta, Google Workspace, and Microsoft Entra ID, and mobile device management (MDM) tools such as Microsoft Intune and Google Workspace, accelerates time to value and simplifies policy hygiene.
- Native cloud PKI and certificate management is included with the secure license, automating certificate issuance, deployment, renewal, and revocation to reduce overhead, avoid misconfigurations, and accelerate zero trust at scale.
- Unified workflows from networking or security automate configuration for IoT and end-user devices, Service Set Identifiers (SSIDs), ports, and Virtual LANs (VLANs) on universal access points (APs) and switches, reducing effort and ensuring consistency.
- Application discovery, policy evaluation and packet capture accelerate root cause analysis and reduce time to resolution.
- A single monitoring and reporting system simplifies management and offers rich insights into security.
- Premier Services support available for an additional fee.



Set network access and application access policy with a single, identity-centric, zero trust engine

Built-in wireless intrusion prevention protects the network at one of its most vulnerable points

- Integration with Extreme Platform ONE Networking reduces complexity and misconfiguration risk.
- Real-time detection identifies, classifies, and prevents unauthorized devices from gaining access.
- Automated countermeasures accelerate response by applying mitigation based on configured policies.

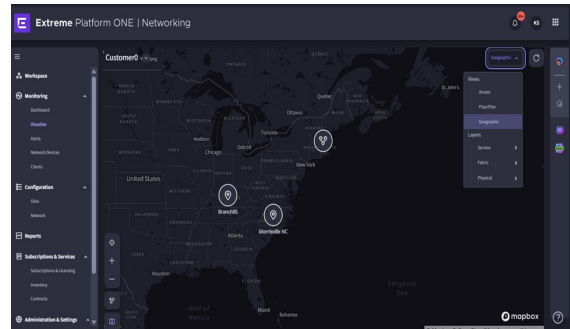
*Requires an additional subscription. See ExtremeCloud™ Universal ZTNA ordering Information below.

One Platform, A Thousand Gains

Organizations are struggling with complexity. Products are siloed. Integrations are expensive. Visibility is limited. Extreme Platform ONE enables customers to improve efficiency and reduce total cost of ownership with multi-domain, multi-layer, multi-vendor views of the network, simplified workflows, and personalized experiences that turn multiple clicks into one.

Deep multi-domain, multi-layer, multi-vendor views make the network simpler to explore, monitor, and troubleshoot

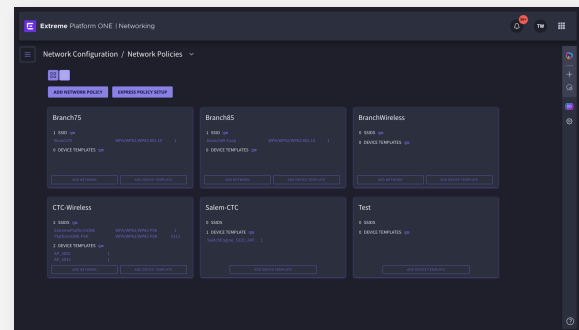
- Unified monitoring simplifies and accelerates troubleshooting with real-time insights into alerts, device status, and client health.
- Third-Party Management Engine (TPME) enables Extreme Platform ONE to display third-party devices alongside of Extreme Devices to allow management of entire multi-vendor networking estate.
- Geographical, logical, physical, access, radio frequency (RF), Extreme Fabric, and service layer views for Extreme devices make the network faster to learn and simpler to manage.
- RF Maps simplify Wi-Fi design, optimization, and troubleshooting.
- Real-time alert overlays and side-by-side views make it faster to pinpoint faults and identify root causes.



Health, alerts, capacity, and other details, at a glance

Accelerated onboarding and zero touch Extreme Fabric save time on new services and moves, adds, and changes

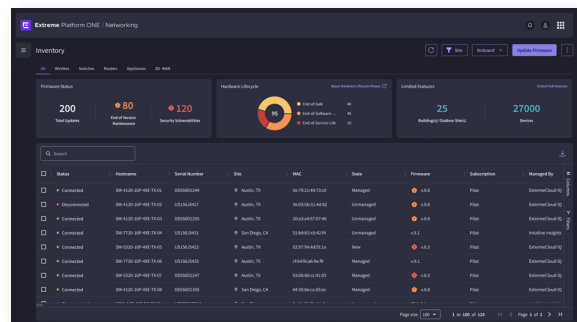
- Site configuration enables network policy across site groups, sites, buildings, and floors.
- Device onboarding makes new devices easy to claim, configure, and deploy individually or in bulk.
- Wired configuration enables administrators to configure Layer 2 and static routing.
- Wireless configuration enables administrators to configure floor plans and parameters for heat maps.
- Extreme Fabric configuration enables rapid fine-tuning of key Fabric parameters.



Quick configuration for sites, devices, and network policies

Built-in, consolidated inventory, subscription, and contract management simplify financial management

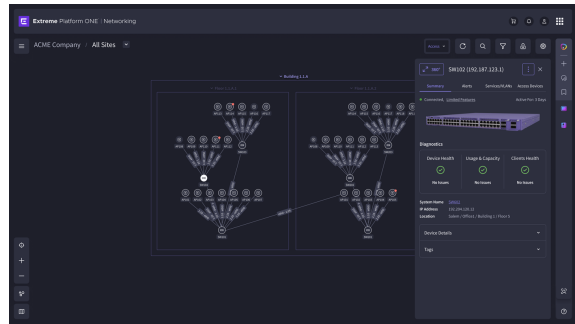
- Device and inventory monitoring accelerate planning, design, configuration, and deployment.
- Proactive compliance alerts reduce risk and save time on compliance efforts.
- Consolidated display of all cloud-based subscriptions and licenses improves cost control and simplifies budgeting
- Simple subscription renewals and new subscription requests take only minutes, saving time, and reduces the risk of disruption.



Inventory and compliance capabilities, built-in

Industry-leading design and usability put users at the center of their experiences

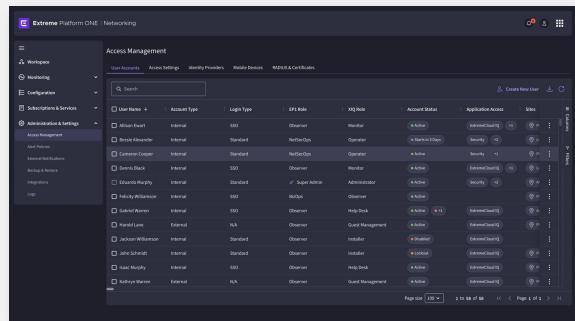
- A composable workspace with role-based access and personalized experiences make every workflow faster.
- A “two-click” design rule improves productivity, helping ensure users quickly find and do things without needing to navigate through multiple screens.
- Device groups, tagging, search, and filter organize the network and make it simpler to find things.
- An inspector gracefully provides expanded details about a select switch, access point, link or other network objects.
- Responsive design enables users to work effectively across different devices and screen sizes.



Graceful expansion simplifies user experience

Powerful administration tools save time on access, alerts, audit logs, and more

- Access management makes it simple to set access rules for internal users and invite partners to collaborate.
- Alerts and notification policy reduce alert volume with set global and local policies with many configurations options.
- Back-up and restore makes it simple to protect a management instance with a few toggles.
- Integrations make the platform simpler to automate with API access token and data management.
- Audit logs simplify compliance efforts, change monitoring, forensics, and rollbacks when needed.



A composable workspace reduces complexity

A Simple, Inclusive Subscription Program Including 24/7 Human Technical Support

Owning and operating a network is more complex and costly than it needs to be. Multiple subscription programs, premium licensing requirements, and hardware that only works with a specific management subscription make it harder to optimize value. Extreme Platform ONE is as simple to buy and grow as it is to use—no need for a complex bill of materials with multiple line items and premium subscription requirements.

Extreme Platform ONE Networking subscription includes:

- Technology, such as Extreme AI, visualization, configuration, Extreme Fabric management, and more
- Technical Support, ExtremeWorks, through Extreme’s industry-leading, 100% in-sourced technology experts via our 24/7 Global Technical Assistance Centers (GTAC) and operating system (OS) support*
- Warranty-only hardware replacement for associated devices (additional advanced hardware replacement options and professional services are available include Remote Readiness Assessments)

For example, an Extreme 4220 48 port switch with an Extreme Platform ONE Networking subscription requires only a single SKU for the hardware and a single SKU for the subscription.

Qty	SKU	Description
1	4220-48T-4X	4220 48 Port Switch 48T-4X
1	EPI-STD-TA-S-C-EW-1YR	EPI Standard SaaS EW Support Tier A 1YR

*Enhanced, white-glove technical support services via Premier Services is optional

Extreme Platform ONE Networking is offered in four tiers in predefined or configurable term lengths. The 3- and 5-year SKUs are term locked. However, flexible terms (2, 4, 6, 7 years, etc.) can be ordered through the non-term flexible 1-year SKUs. Hardware to tier subscriptions mappings for Universal platforms are below. However, non-Universal platforms such as the X435, X460-G2, VSP7400, etc. that have not reached end-of-service-life (EOSL) are also eligible based on the class of the device.

Tier	Wireless	Wired	Term
A	All Indoor and Outdoor APs	4100, 4200, 5100,5300 Series	1 (flexible), 3, 5
B		5400 Series	1 (flexible), 3, 5
C		5500 Series	1 (flexible), 3, 5
D		5700, 7500, 7700 Series	1 (flexible), 3, 5

Extreme Platform ONE subscriptions include the following entitlements for the term of the contract

- Right-to-use (RTU) Extreme Platform ONE and Extreme AI Expert, including GTAC phone support, upgrade, and maintenance releases
- Embedded network OS support including feature and maintenance releases for managed devices (such as AP5020, AP4000, 4120, 4220, 5320, 5520, 5720 Series switches etc.).
- AI-assisted GTAC support.
- GTAC telephone support for the embedded network OS of the managed device.

Subscription Part Numbers and Descriptions

Extreme Platform ONE Subscriptions with included ExtremeWorks TAC & OS support

Part Number	Description
EPI-STD-TA-S-C-EW-1YR	Extreme Platform ONE Standard Networking Right-to-use and EW TAC OS Support for one (1) device of Tier A per year
EPI-STD-TA-S-C-EW-3YR	Extreme Platform ONE Standard Networking Right-to-use and EW TAC OS Support for one (1) device of Tier A for three (3) years
EPI-STD-TA-S-C-EW-5YR	Extreme Platform ONE Standard Networking Right-to-use and EW TAC OS Support for one (1) device of Tier A for five (5) years
EPI-STD-TB-S-C-EW-1YR	Extreme Platform ONE Standard Networking Right-to-use and EW TAC OS Support for one (1) device of Tier B per year
EPI-STD-TB-S-C-EW-3YR	Extreme Platform ONE Standard Networking Right-to-use and EW TAC OS Support for one (1) device of Tier B for three (3) years
EPI-STD-TB-S-C-EW-5YR	Extreme Platform ONE Standard Networking Right-to-use and EW TAC OS Support for one (1) device of Tier B for five (5) years
EPI-STD-TC-S-C-EW-1YR	Extreme Platform ONE Standard Networking Right-to-use and EW TAC OS Support for one (1) device of Tier C per year
EPI-STD-TC-S-C-EW-3YR	Extreme Platform ONE Standard Networking Right-to-use and EW TAC OS Support for one (1) device of Tier C for three (3) years
EPI-STD-TC-S-C-EW-5YR	Extreme Platform ONE Standard Networking Right-to-use and EW TAC OS Support for one (1) device of Tier C for five (5) years
EPI-STD-TD-S-C-EW-1YR	Extreme Platform ONE Standard Networking Right-to-use and EW TAC OS Support for one (1) device of Tier D per year
EPI-STD-TD-S-C-EW-3YR	Extreme Platform ONE Standard Networking Right-to-use and EW TAC OS Support for one (1) device of Tier D for three (3) years
EPI-STD-TD-S-C-EW-5YR	Extreme Platform ONE Standard Networking Right-to-use and EW TAC OS Support for one (1) device of Tier D for five (5) years

Extreme Platform ONE Subscriptions with included ExtremeWorks Premier TAC & OS support

Part Number	Description
EPI-STD-TA-S-C-EWP-1YR	Extreme Platform ONE Standard Networking Right-to-use and EW Premier TAC OS Support for one (1) device of Tier A per year
EPI-STD-TA-S-C-EWP-3YR	Extreme Platform ONE Standard Networking Right-to-use and EW Premier TAC OS Support for one (1) device of Tier A for three (3) years
EPI-STD-TA-S-C-EWP-5YR	Extreme Platform ONE Standard Networking Right-to-use and EW Premier TAC OS Support for one (1) device of Tier A for five (5) years
EPI-STD-TB-S-C-EWP-1YR	Extreme Platform ONE Standard Networking Right-to-use and EW Premier TAC OS Support for one (1) device of Tier B per year
EPI-STD-TB-S-C-EWP-3YR	Extreme Platform ONE Standard Networking Right-to-use and EW Premier TAC OS Support for one (1) device of Tier B for three (3) years
EPI-STD-TB-S-C-EWP-5YR	Extreme Platform ONE Standard Networking Right-to-use and EW Premier TAC OS Support for one (1) device of Tier B for five (5) years
EPI-STD-TC-S-C-EWP-1YR	Extreme Platform ONE Standard Networking Right-to-use and EW Premier TAC OS Support for one (1) device of Tier C per year
EPI-STD-TC-S-C-EWP-3YR	Extreme Platform ONE Standard Networking Right-to-use and EW Premier TAC OS Support for one (1) device of Tier C for three (3) years
EPI-STD-TC-S-C-EWP-5YR	Extreme Platform ONE Standard Networking Right-to-use and EW Premier TAC OS Support for one (1) device of Tier C for five (5) years
EPI-STD-TD-S-C-EWP-1YR	Extreme Platform ONE Standard Networking Right-to-use and EW Premier TAC OS Support for one (1) device of Tier D per year
EPI-STD-TD-S-C-EWP-3YR	Extreme Platform ONE Standard Networking Right-to-use and EW Premier TAC OS Support for one (1) device of Tier D for three (3) years
EPI-STD-TD-S-C-EWP-5YR	Extreme Platform ONE Standard Networking Right-to-use and EW Premier TAC OS Support for one (1) device of Tier D for five (5) years

Extreme Platform ONE Subscriptions with included Partner Support Service TAC & OS support (requires partner co-delivery certification)

Part Number	Description
EPI-STD-TA-S-C-PSS-1YR	Extreme Platform ONE Standard Networking Right-to-use and Partner Support Service (PSS) TAC OS Support for one (1) device of Tier A per year
EPI-STD-TB-S-C-PSS-1YR	Extreme Platform ONE Standard Networking Right-to-use and Partner Support Service (PSS) TAC OS Support for one (1) device of Tier B per year
EPI-STD-TC-S-C-PSS-1YR	Extreme Platform ONE Standard Networking Right-to-use and Partner Support Service (PSS) TAC OS Support for one (1) device of Tier C per year
EPI-STD-TD-S-C-PSS-1YR	Extreme Platform ONE Standard Networking Right-to-use and Partner Support Service (PSS) TAC OS Support for one (1) device of Tier D per year
EPI-STD-TA-S-C-PSS-3YR	Extreme Platform ONE Standard Networking Right-to-use and Partner Support Service (PSS) TAC OS Support for one (1) device of Tier A for three (3) years
EPI-STD-TB-S-C-PSS-3YR	Extreme Platform ONE Standard Networking Right-to-use and Partner Support Service (PSS) TAC OS Support for one (1) device of Tier B for three (3) years
EPI-STD-TC-S-C-PSS-3YR	Extreme Platform ONE Standard Networking Right-to-use and Partner Support Service (PSS) TAC OS Support for one (1) device of Tier C for three (3) years
EPI-STD-TD-S-C-PSS-3YR	Extreme Platform ONE Standard Networking Right-to-use and Partner Support Service (PSS) TAC OS Support for one (1) device of Tier D for three (3) years
EPI-STD-TA-S-C-PSS-5YR	Extreme Platform ONE Standard Networking Right-to-use and Partner Support Service (PSS) TAC OS Support for one (1) device of Tier A for five (5) years
EPI-STD-TB-S-C-PSS-5YR	Extreme Platform ONE Standard Networking Right-to-use and Partner Support Service (PSS) TAC OS Support for one (1) device of Tier B for five (5) years
EPI-STD-TC-S-C-PSS-5YR	Extreme Platform ONE Standard Networking Right-to-use and Partner Support Service (PSS) TAC OS Support for one (1) device of Tier C for five (5) years
EPI-STD-TD-S-C-PSS-5YR	Extreme Platform ONE Standard Networking Right-to-use and Partner Support Service (PSS) TAC OS Support for one (1) device of Tier D for five (5) years

Extreme Platform ONE SD-WAN Subscriptions with Included TAC&OS

Extreme Platform ONE SD-WAN Subscriptions	
Part Number	Description
EP1-SDW-STD-S-S-C-EW	Extreme Platform ONE SD-WAN Standard Networking Right-to-use and EW TAC OS Support for one (1) device of Tier S per year
EP1-SDW-STD-M-S-C-EW	Extreme Platform ONE SD-WAN Standard Networking Right-to-use and EW TAC OS Support for one (1) device of Tier M per year
EP1-SDW-STD-L-S-C-EW	Extreme Platform ONE SD-WAN Standard Networking Right-to-use and EW TAC OS Support for one (1) device of Tier L per year
EP1-SDW-ADV-S-S-C-EW	Extreme Platform ONE SD-WAN Advanced Networking Right-to-use and EW TAC OS Support for one (1) device of Tier S per year
EP1-SDW-ADV-M-S-C-EW	Extreme Platform ONE SD-WAN Advanced Networking Right-to-use and EW TAC OS Support for one (1) device of Tier M per year
EP1-SDW-ADV-L-S-C-EW	Extreme Platform ONE SD-WAN Advanced Networking Right-to-use and EW TAC OS Support for one (1) device of Tier L per year
EP1-SDW-STD-S-S-C-EWP	Extreme Platform ONE SD-WAN Standard Networking Right-to-use and EWP TAC OS Support for one (1) device of Tier S per year
EP1-SDW-STD-M-S-C-EWP	Extreme Platform ONE SD-WAN Standard Networking Right-to-use and EWP TAC OS Support for one (1) device of Tier M per year
EP1-SDW-STD-L-S-C-EWP	Extreme Platform ONE SD-WAN Standard Networking Right-to-use and EWP TAC OS Support for one (1) device of Tier L per year
EP1-SDW-ADV-S-S-C-EWP	Extreme Platform ONE SD-WAN Advanced Networking Right-to-use and EWP TAC OS Support for one (1) device of Tier S per year
EP1-SDW-ADV-M-S-C-EWP	Extreme Platform ONE SD-WAN Advanced Networking Right-to-use and EWP TAC OS Support for one (1) device of Tier M per year
EP1-SDW-ADV-L-S-C-EWP	Extreme Platform ONE SD-WAN Advanced Networking Right-to-use and EWP TAC OS Support for one (1) device of Tier L per year
EP1-SDW-STD-S-S-C-PSS	Extreme Platform ONE SD-WAN Standard Networking Right-to-use and PSS TAC OS Support for one (1) device of Tier S per year

Extreme Platform ONE Subscriptions with included ExtremeWorks Premier TAC & OS support

Part Number	Description
EPI-SDW-STD-M-S-C-PSS	Extreme Platform ONE SD-WAN Standard Networking Right-to-use and PSS TAC OS Support for one (1) device of Tier M per year
EPI-SDW-STD-L-S-C-PSS	Extreme Platform ONE SD-WAN Standard Networking Right-to-use and PSS TAC OS Support for one (1) device of Tier L per year
EPI-SDW-ADV-S-S-C-PSS	Extreme Platform ONE SD-WAN Advanced Networking Right-to-use and PSS TAC OS Support for one (1) device of Tier S per year
EPI-SDW-ADV-M-S-C-PSS	Extreme Platform ONE SD-WAN Advanced Networking Right-to-use and PSS TAC OS Support for one (1) device of Tier M per year
EPI-SDW-ADV-L-S-C-PSS	Extreme Platform ONE SD-WAN Advanced Networking Right-to-use and PSS TAC OS Support for one (1) device of Tier L per year
EPI-SDW-STD-S-S-C-EW-3YR	Extreme Platform ONE SD-WAN Standard Networking Right-to-use and EW TAC OS Support for one (1) device of Tier S for three (3) years
EPI-SDW-STD-M-S-C-EW-3YR	Extreme Platform ONE SD-WAN Standard Networking Right-to-use and EW TAC OS Support for one (1) device of Tier M for three (3) years
EPI-SDW-STD-L-S-C-EW-3YR	Extreme Platform ONE SD-WAN Standard Networking Right-to-use and EW TAC OS Support for one (1) device of Tier L for three (3) years
EPI-SDW-ADV-S-S-C-EW-3YR	Extreme Platform ONE SD-WAN Advanced Networking Right-to-use and EW TAC OS Support for one (1) device of Tier S for three (3) years
EPI-SDW-ADV-M-S-C-EW-3YR	Extreme Platform ONE SD-WAN Advanced Networking Right-to-use and EW TAC OS Support for one (1) device of Tier M for three (3) years
EPI-SDW-ADV-L-S-C-EW-3YR	Extreme Platform ONE SD-WAN Advanced Networking Right-to-use and EW TAC OS Support for one (1) device of Tier L for three (3) years
EPI-SDW-STD-S-S-C-EWP-3YR	Extreme Platform ONE SD-WAN Standard Networking Right-to-use and EWP TAC OS Support for one (1) device of Tier S for three (3) years
EPI-SDW-STD-M-S-C-EWP-3YR	Extreme Platform ONE SD-WAN Standard Networking Right-to-use and EWP TAC OS Support for one (1) device of Tier M for three (3) years
EPI-SDW-STD-L-S-C-EWP-3YR	Extreme Platform ONE SD-WAN Standard Networking Right-to-use and EWP TAC OS Support for one (1) device of Tier L for three (3) years
EPI-SDW-ADV-S-S-C-EWP-3YR	Extreme Platform ONE SD-WAN Advanced Networking Right-to-use and EWP TAC OS Support for one (1) device of Tier S for three (3) years
EPI-SDW-ADV-M-S-C-EWP-3YR	Extreme Platform ONE SD-WAN Advanced Networking Right-to-use and EWP TAC OS Support for one (1) device of Tier M for three (3) years
EPI-SDW-ADV-L-S-C-EWP-3YR	Extreme Platform ONE SD-WAN Advanced Networking Right-to-use and EWP TAC OS Support for one (1) device of Tier L for three (3) years
EPI-SDW-STD-S-S-C-PSS-3YR	Extreme Platform ONE SD-WAN Standard Networking Right-to-use and PSS TAC OS Support for one (1) device of Tier S for three (3) years
EPI-SDW-STD-M-S-C-PSS-3YR	Extreme Platform ONE SD-WAN Standard Networking Right-to-use and PSS TAC OS Support for one (1) device of Tier M for three (3) years
EPI-SDW-STD-L-S-C-PSS-3YR	Extreme Platform ONE SD-WAN Standard Networking Right-to-use and PSS TAC OS Support for one (1) device of Tier L for three (3) years
EPI-SDW-ADV-S-S-C-PSS-3YR	Extreme Platform ONE SD-WAN Advanced Networking Right-to-use and PSS TAC OS Support for one (1) device of Tier S for three (3) years
EPI-SDW-ADV-M-S-C-PSS-3YR	Extreme Platform ONE SD-WAN Advanced Networking Right-to-use and PSS TAC OS Support for one (1) device of Tier M for three (3) years
EPI-SDW-ADV-L-S-C-PSS-3YR	Extreme Platform ONE SD-WAN Advanced Networking Right-to-use and PSS TAC OS Support for one (1) device of Tier L for three (3) years
EPI-SDW-STD-S-S-C-EW-5YR	Extreme Platform ONE SD-WAN Standard Networking Right-to-use and EW TAC OS Support for one (1) device of Tier S for five (5) years
EPI-SDW-STD-M-S-C-EW-5YR	Extreme Platform ONE SD-WAN Standard Networking Right-to-use and EW TAC OS Support for one (1) device of Tier M for five (5) years
EPI-SDW-STD-L-S-C-EW-5YR	Extreme Platform ONE SD-WAN Standard Networking Right-to-use and EW TAC OS Support for one (1) device of Tier L for five (5) years
EPI-SDW-ADV-S-S-C-EW-5YR	Extreme Platform ONE SD-WAN Advanced Networking Right-to-use and EW TAC OS Support for one (1) device of Tier S for five (5) years
EPI-SDW-ADV-M-S-C-EW-5YR	Extreme Platform ONE SD-WAN Advanced Networking Right-to-use and EW TAC OS Support for one (1) device of Tier M for five (5) years

Extreme Platform ONE SD-WAN Subscriptions with Included TAC&OS

Part Number	Description
EPI-SDW-ADV-L-S-C-EW-5YR	Extreme Platform ONE SD-WAN Advanced Networking Right-to-use and EW TAC OS Support for one (1) device of Tier L for five (5) years
EPI-SDW-ADV-L-S-C-EW-5YR	Extreme Platform ONE SD-WAN Advanced Networking Right-to-use and EW TAC OS Support for one (1) device of Tier L for five (5) years
EPI-SDW-STD-S-S-C-EWP-5YR	Extreme Platform ONE SD-WAN Standard Networking Right-to-use and EWP TAC OS Support for one (1) device of Tier S for five (5) years
EPI-SDW-STD-M-S-C-EWP-5YR	Extreme Platform ONE SD-WAN Standard Networking Right-to-use and EWP TAC OS Support for one (1) device of Tier M for five (5) years
EPI-SDW-STD-L-S-C-EWP-5YR	Extreme Platform ONE SD-WAN Standard Networking Right-to-use and EWP TAC OS Support for one (1) device of Tier L for five (5) years
EPI-SDW-ADV-S-S-C-EWP-5YR	Extreme Platform ONE SD-WAN Advanced Networking Right-to-use and EWP TAC OS Support for one (1) device of Tier S for five (5) years
EPI-SDW-ADV-M-S-C-EWP-5YR	Extreme Platform ONE SD-WAN Advanced Networking Right-to-use and EWP TAC OS Support for one (1) device of Tier M for five (5) years
EPI-SDW-ADV-L-S-C-EWP-5YR	Extreme Platform ONE SD-WAN Advanced Networking Right-to-use and EWP TAC OS Support for one (1) device of Tier L for five (5) years
EPI-SDW-STD-S-S-C-PSS-5YR	Extreme Platform ONE SD-WAN Standard Networking Right-to-use and PSS TAC OS Support for one (1) device of Tier S for five (5) years
EPI-SDW-STD-M-S-C-PSS-5YR	Extreme Platform ONE SD-WAN Standard Networking Right-to-use and PSS TAC OS Support for one (1) device of Tier M for five (5) years
EPI-SDW-STD-L-S-C-PSS-5YR	Extreme Platform ONE SD-WAN Standard Networking Right-to-use and PSS TAC OS Support for one (1) device of Tier L for five (5) years
EPI-SDW-ADV-S-S-C-PSS-5YR	Extreme Platform ONE SD-WAN Advanced Networking Right-to-use and PSS TAC OS Support for one (1) device of Tier S for five (5) years
EPI-SDW-ADV-M-S-C-PSS-5YR	Extreme Platform ONE SD-WAN Advanced Networking Right-to-use and PSS TAC OS Support for one (1) device of Tier M for five (5) years
EPI-SDW-ADV-L-S-C-PSS-5YR	Extreme Platform ONE SD-WAN Advanced Networking Right-to-use and PSS TAC OS Support for one (1) device of Tier L for five (5) years

Extreme Platform ONE SD-WAN Appliances

SDWAN Appliances for Extreme Platform ONE	Description
SDW-EPI-30SO-A	SD-WAN Small Tier Appliance ipe-30so
SDW-EPI-30AX-A	SD-WAN Small Tier Appliance ipe-30ax
SDW-EPI-40AXV2-A	SD-WAN Medium Tier Appliance ipe-40axV2
SDW-EPI-42OAX-A	SD-WAN Medium Tier Appliance ipe-420axV2
SDW-EPI-220OAXT-A	SD-WAN Large Tier Appliance ipe-2200ax-T
SDW-EPI-220OAXF-A	SD-WAN Large Tier Appliance ipe-2200ax-F

Services

Included with Extreme Platform ONE Networking subscriptions is new and updated hardware replacement service options. Extreme Networks' customer top-rated GTAC support and access to network OS updates are included with an Extreme Platform ONE subscription. This entitles full 24/7 human technical support for the Extreme hardware product consuming an Extreme Platform ONE subscription to complement and augment your Extreme Platform ONE experience.

It is not necessary to purchase ExtremeWorks (97000) or PartnerWorks Plus (95600) TAC&OS support for a hardware product that is onboarded to Extreme Platform ONE. ExtremeWorks Premier is an enhanced option customers can choose for their Extreme Platform ONE subscription—no additional service offer is necessary for entitlement to Premier support on the hardware device consuming the Premier Extreme Platform ONE subscription.

For hardware replacement and onsite maintenance services, there are specific service SKUs that can be used in conjunction with the TAC&OS entitlement with an Extreme Platform ONE subscription. These are Advanced Hardware Replacement, RMA-Only offers and are only valid for Extreme hardware that also consumes an Extreme Platform ONE subscription. The AHR-RMA-Only offer types are listed in the table below.

Service SKU (prefix only*)	Service Offer Description
97304	EW NBD AHR RMA Only
97307	EW 4HR AHR RMA Only
97308	EW 4HR ONSITE RMA Only
97311	EW NBD ONSITE RMA Only
94304	EPSS NBD AHR RMA Only
94307	EPSS 4HR AHR RMA Only
94308	EPSS 4HR ONSITE RMA Only
94311	EPSS NBD ONSITE RMA Only
94604	EDSS NBD AHR RMA Only

*Detailed Service SKUs and descriptions are included under each prefix; please see price book for more information.

Extreme Platform ONE Security Ordering Information

ExtremeCloud Universal ZTNA has been integrated into Extreme Platform ONE and is now available as Extreme Platform ONE Security with an additional subscription. Extreme Platform ONE Security provides single policy, universal zero-trust network, and application access control across campus, branch and remote locations. The subscription is optional and not required for Extreme Platform ONE except where noted earlier in this data sheet.

Tiers	SKU	SKU Description
ExtremeCloud Universal ZTNA Secure Tier Subscription	XC-SUI-S-C-EW	ExtremeCloud Secure Tier, includes Network Access Control and RADIUS as a Service, minimum of 50 qty required for initial order, SaaS Subscription and EW SaaS Support per user identity, per year
ExtremeCloud Universal ZTNA Secure Tier Subscription	XC-SUI-S-C-PWP	ExtremeCloud Secure Tier, includes Network Access Control and RADIUS as a Service, minimum of 50 qty required for initial order, SaaS Subscription and PWP SaaS Support per user identity, per year
ExtremeCloud Universal ZTNA Secure Plus Tier Subscription	XC-SPUI-S-C-EW	ExtremeCloud Secure Plus Tier, includes Universal ZTNA, minimum of 50 qty required for initial order, SaaS Subscription and EW SaaS Support per user identity, per year
ExtremeCloud Universal ZTNA Secure Plus Tier Subscription	XC-SPUI-S-C-PWP	ExtremeCloud Secure Plus Tier, includes Universal ZTNA, minimum of 50 qty required for initial order, SaaS Subscription and PWP SaaS Support per user identity, per year
UZTNA Secure Premier Services	XC-SUI-S-C-EWP	ExtremeCloud Secure Tier and EWP Support (one year)
UZTNA Secure Plus Premier Services	XC-SPUI-S-C-EWP	ExtremeCloud Secure Plus Tier and EWP Support (one year)

Extreme Platform ONE Third-Party Management Engine Ordering Information

The Third-Party Management Engine (TPME) for Extreme Platform ONE is now available. The Third-Party Management Engine allows third-party devices to be discovered by the TPME and allows information for discovered devices to be included in Extreme Platform ONE displays alongside Extreme devices. Each third-party device will require a license to allow it to be onboarded by the TPME and Extreme Platform ONE. Note: An Extreme Platform ONE EPI-STD-TA-S-C Tier A subscription is a pre-requisite to use the Third-Party Management Engine.

Third-Party Management Engine for Extreme Platform ONE Licensing	
Part Number	Description
EPI-STD-T3RD-S-C-EW-1YR	Extreme Platform ONE Standard Networking Subscription with EW Support for one (1) Third-Party device per year; support limited to Extreme Networks' applications.
EPI-STD-T3RD-S-C-EWP-1YR	Extreme Platform ONE Standard Networking Subscription with EWP Support for one (1) Third-Party device per year; support limited to Extreme Networks' applications.
EPI-STD-T3RD-S-C-PSS-1YR	Extreme Platform ONE Standard Networking Subscription with PSS Support for one (1) Third-Party device per year; support limited to Extreme Networks' applications.
EPI-STD-T3RD-S-C-EW-3YR	Extreme Platform ONE Standard Networking Subscription with EW Support for one (1) Third-Party device for three (3) years; support limited to Extreme Networks' applications.
EPI-STD-T3RD-S-C-EWP-3YR	Extreme Platform ONE Standard Networking Subscription with EWP Support for one (1) Third-Party device for three (3) years; support limited to Extreme Networks' applications.
EPI-STD-T3RD-S-C-PSS-3YR	Extreme Platform ONE Standard Networking Subscription with PSS Support for one (1) Third-Party device for three (3) years; support limited to Extreme Networks' applications.
EPI-STD-T3RD-S-C-EW-5YR	Extreme Platform ONE Standard Networking Subscription with EW Support for one (1) Third-Party device for five (5) years; support limited to Extreme Networks' applications.
EPI-STD-T3RD-S-C-EWP-5YR	Extreme Platform ONE Standard Networking Subscription with EWP Support for one (1) Third-Party device for five (5) years; support limited to Extreme Networks' applications.
EPI-STD-T3RD-S-C-PSS-5YR	Extreme Platform ONE Standard Networking Subscription with PSS Support for one (1) Third-Party device for five (5) years; support limited to Extreme Networks' applications.

Additional Information

For additional technical information on Extreme Platform ONE, please visit extremenetworks.com/platform-one.

Additional resources available include:

- [Extreme Platform ONE Extreme Live Demos](#)
- [Extreme Platform ONE Self-Guided Product Tours](#)
- [Total Cost of Ownership \(TCO\) Calculator](#)
- [ACG Research Report: The Economic Benefits of Extreme Platform ONE™ and Extreme Fabric](#)
- [IDC White Paper: The Era of Connectivity Platforms: Reimagining Networking Across the Enterprise](#)
- [Customer Case Study: West Suffolk NHS Trust Foundation Upgrades to Platform ONE in 47 minutes](#)
- [Futurium White Paper: Delivering ROI with Extreme Fabric, Views from the Field](#)
- [Network Security Web Page](#)