

Extreme Fabric + Verkada

Automated and Secure Network Camera Deployment

Cloud physical security products, like video security devices and electronic physical access control systems, are becoming critical infrastructure for organizations across industries. Managing these systems, and the associated networking infrastructure, poses new requirements on an organizations systems.


Verkada's six product lines provide unparalleled building security through an integrated, secure cloud-based software platform.

[Video Security Cameras](#) | [Access Control](#) | [Alarms](#) | [Environmental Sensors](#) | [Workplace](#) | [Intercoms](#)


Many networks are not equipped to deal with modern video surveillance applications or the Power over Ethernet (POE) power requirements. Data generated by state-of-the-art, POE surveillance cameras runs over poorly designed and under-powered multicast networks, limiting the full potential of surveillance data. With elegantly integrated solutions, video security and networking teams enable their organizations to scale quickly and provide resilient surveillance solutions.

Simplify and Scale Surveillance Deployments


Quickly deploy and maintain large IP security camera networks at-scale by leveraging automations built into existing network infrastructure.



Eliminate the need for manual configurations, increase the speed of deployments, and allow applications to run up to 3X faster.



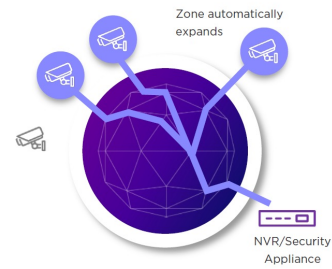
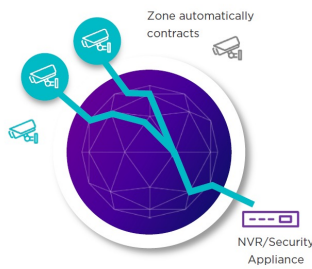
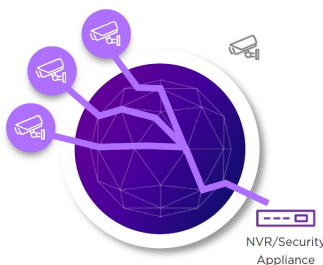
Scale thousands of video camera devices without needing maintenance windows or on-site network experts.



Streamline and simplify network management by reducing the number of required protocols and touchpoints.

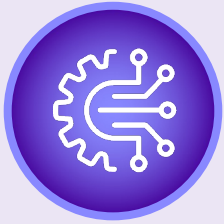
Enhanced Security with Elasticity

Extreme Fabric allows security camera zones to elastically and automatically adjust, as cameras and other physical security infrastructure are removed, added, or moved. With zero-touch provisioning of Verkada cameras onto Extreme's Fabric network, cameras are always assigned to a secure multicast-enabled segment regardless of where they connect to the fabric network.



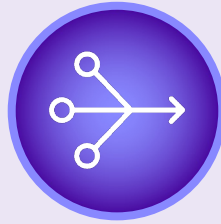
Features

The partnership between Extreme and Verkada delivers highly-scalable video surveillance that is easy to design, deploy and operate. The tight integration of the Verkada security cameras with the Extreme Networks Fabric solution allows for easy scaling of network video streams and a reliable, always available video surveillance solution.



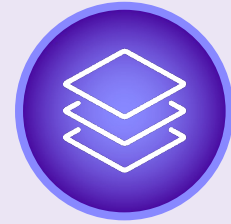
Tight Integration

Verkada's latest network cameras support Extreme Fabric due to built-in software integration between Extreme and Verkada.



Protocol Simplification

Reduce the stack of protocols from a complex combination to a single IEEE/IETF Shortest Path Bridging protocol.



Flexible Enablement and Multiple Security Tiers

Enable multiple levels of additional security through Fabric authentication and ExtremeControl.

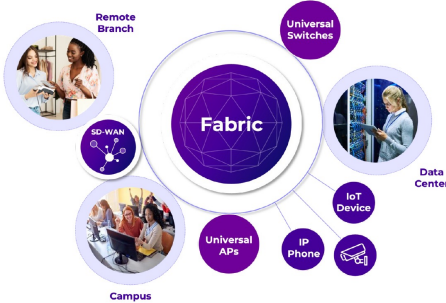
Extreme Fabric + Verkada Video Security Camera Models

Extreme Fabric is supported on the following Verkada Video Security Models:

- **Dome Series:** CD22, CD22-E, CD31, CD31-E, CD32, CD32-E, CD41, CD41-E, CD42, CD42-E, CD42-E-F, CD42-F, CD51, CD51-E, CD52, CD52-E, CD52-E-F, CD52-F, CD61, CD61-E, CD62, CD62-E, D50, D40, D80
- **Bullet Series:** CB51-E, CB51-TE, CB52-E, CB52-TE, CB61-E, CB61-TE, CB62-E, CB62-TE
- **Mini Series:** CM22, CM41, CM41-E, CM41-S, CM42, CM61
- **Fisheye Series:** CF81-E
- **Multisensor Series:** CH52-E
- **PTZ Series:** CP52-ED30



Extreme Fabric



Extreme Fabric is a standards-based, network abstraction technology that enables multiple, discrete, and secure virtual networks to run seamlessly over your network infrastructure – independent of topology. These virtualized networks are inherently secure, with automated provisioning that minimizes manual configuration and the risk of network errors.

Learn More: [Extreme Fabric](#) | [Verkada Network Cameras](#) | [ExtremeAlliance Technology Partners](#)



<http://www.extremenetworks.com/contact>

©2024 Extreme Networks, Inc. All rights reserved. Extreme Networks and the Extreme Networks logo are trademarks or registered trademarks of Extreme Networks, Inc. in the United States and/or other countries. All other names are the property of their respective owners. For additional information on Extreme Networks Trademarks please see <http://www.extremenetworks.com/company/legal/trademarks>. Specifications and product availability are subject to change without notice. 62187-0724-10