



## Top 10 Reasons to Add Extreme Portfolio Devices to ExtremeCloud™ IQ

ExtremeCloud IQ (XIQ) has added full visibility and configuration capabilities for EXOS and VOSS switches, as well as support for WiNG devices from the Extreme portfolio. This answers the question: why should you add your devices to XIQ?

### 1. Unified Management of Access Points/Switches/Routers

ExtremeCloud IQ is an industry-leading and visionary approach to cloud-driven networking, built on a 4th generation cloud architecture to take full advantage of Extreme's end-to-end networking solutions. ExtremeCloud IQ delivers unified, full-stack management of wireless access points, switches, and routers and enables onboarding, configuration, monitoring, troubleshooting, reporting, and more. For a complete list of supported devices in XIQ, view the bottom of [this page](#). Additionally, customers can choose to deploy the management application “your way”: customers can deploy with cloud options such as public cloud, private cloud, hybrid cloud, or local/on-premises. Within public cloud, customers can choose to utilize AWS, Microsoft Azure, Google cloud, or even containerized options.

STATUS	HOST NAME	POLICY	UPTIME	MGT IP ADDRESS	CLIENTS	MAC	LOCATION
<input type="checkbox"/>	ATOM-A	Assign Policy	9d 0h 5m	192.168.82.5	5	206C8A0DF7	Assign Location
<input type="checkbox"/>	XR600P_A	Branch-Router-Demo	11d 3h 10m	192.168.135.25		F4EAB52C2C	Assign Location
<input type="checkbox"/>	MeshPortal-AP55	MESH-DEMO	11d 1h 40m	192.168.135.25		BB7CF259C5C	Corp >> Atlanta-Camp
<input type="checkbox"/>	AP305C-B	Branch-Router-Demo	10d 22h 42m	192.168.135.25		03FDD0 Corp	>> New York Ca
<input type="checkbox"/>	AP650	Corp-Wireless	11d 1h 40m	192.168.135.25		03FDD0 Corp	>> Building-A >> F
<input type="checkbox"/>	Wallplate-Router	Branch-Router-Demo	11d				Assign Location

## 2. Flexible and Scalable Licensing Model

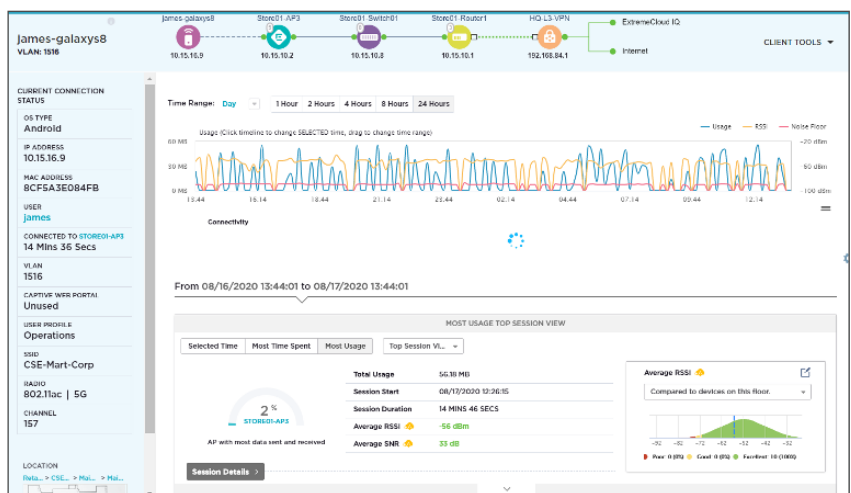
With SaaS tiering, we make it easy for you to fully tailor your networking solution needs for both now and in the future. Whether you are looking for basic reporting and configuration, or advanced analytics and proactive AI network assurance, ExtremeCloud IQ has you covered. If at any point you need to increase the level of network intelligence, it's simple to upgrade. Additionally, licenses are not tied to a specific serial number of a device, so they are portable within the customer's network.

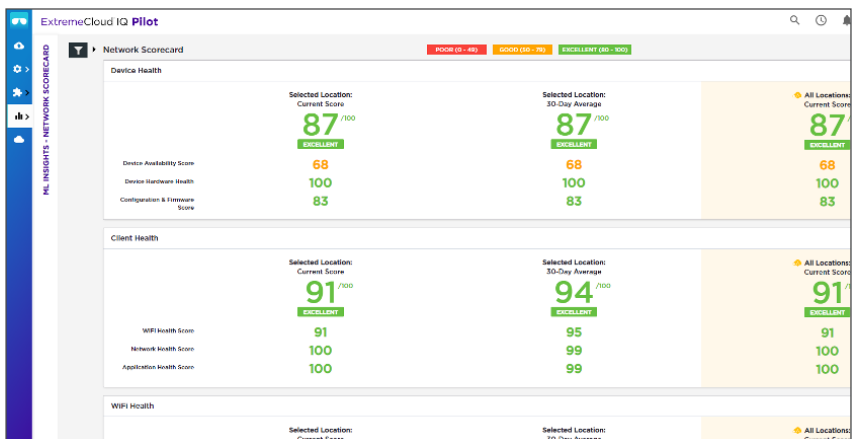
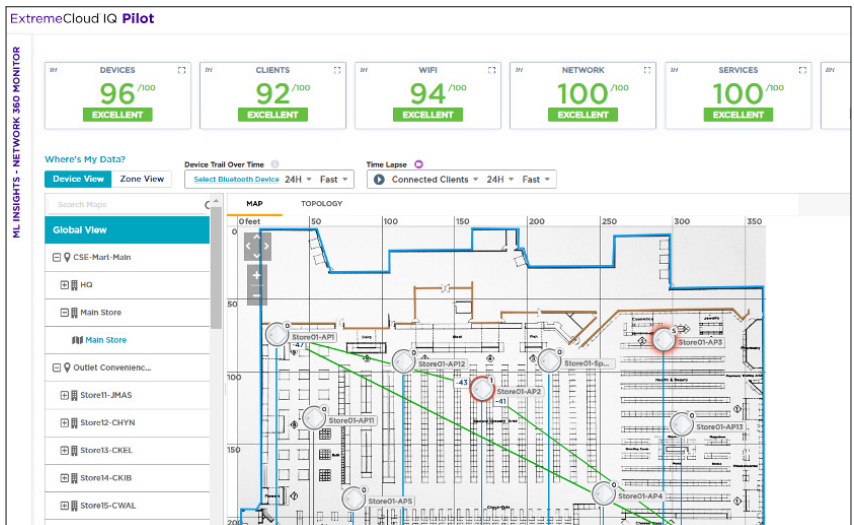
ExtremeCloud IQ Connect is our base level tier that provides subscription-free cloud management for supported devices, enabling organizations to deploy enterprise-grade connectivity with basic network management. This is a great way to try out the system before committing to the full license. The Navigator tier (with a reduced price) is for WiNG device attachment to the cloud, allowing administrators full visibility into user traffic, device activity, and topology of your network.

	ExtremeCloud™ IQ Connect	ExtremeCloud™ IQ Navigator	ExtremeCloud™ IQ Pilot	COMING SOON ExtremeCloud™ IQ Co-Pilot	COMING SOON ExtremeCloud™ IQ Auto-Pilot
<b>Availability</b>	PUBLIC	PUBLIC	PUBLIC  PRIVATE  LOCAL	PUBLIC  PRIVATE	PUBLIC  PRIVATE
<b>Feature Set</b>	Free device management for access points, switches, and routers	EVERYTHING IN CONNECT, PLUS: Additional management functions for Extreme WiNG products	EVERYTHING IN CONNECT, PLUS: Advanced infrastructure management, reporting, and remediation tools	EVERYTHING IN PILOT, PLUS: Machine Learning-derived insights and intelligence	EVERYTHING IN CO-PILOT, PLUS: Advanced Actionable AI
<b>Unique Features</b>	<ul style="list-style-type: none"> <li>• Device onboarding</li> <li>• Guided Configuration</li> <li>• Centralized Management</li> <li>• Wi-Fi Planner</li> <li>• Basic Monitoring Tools</li> <li>• Essential Security</li> </ul>	<ul style="list-style-type: none"> <li>• Application Visibility</li> <li>• SSH Proxy</li> <li>• Web Proxy to WiNG Controller</li> <li>• Web Proxy to Extreme Campus Controller</li> </ul>	<ul style="list-style-type: none"> <li>• Advanced Topology View</li> <li>• Troubleshooting Heuristics</li> <li>• Contextualized Optimization</li> <li>• Role-Based Profiling</li> <li>• Advanced 360° Reporting</li> <li>• Comparative Analytics</li> </ul>	<ul style="list-style-type: none"> <li>• Supervised ML, Insights &amp; Tuning</li> <li>• Automated Bug Fixes</li> <li>• ML Issue Resolution</li> <li>• Automated RMA</li> <li>• Advanced NAC Integration</li> <li>• Multi-Cloud Support</li> </ul>	<ul style="list-style-type: none"> <li>• AI Configuration</li> <li>• AI DFS Optimization</li> <li>• AI-Driven Quarantine</li> <li>• AI Segmentation</li> <li>• AI Anomaly Detection</li> <li>• AI WPS</li> </ul>

## 3. ML/AI- Client 360, Network 360, Tools

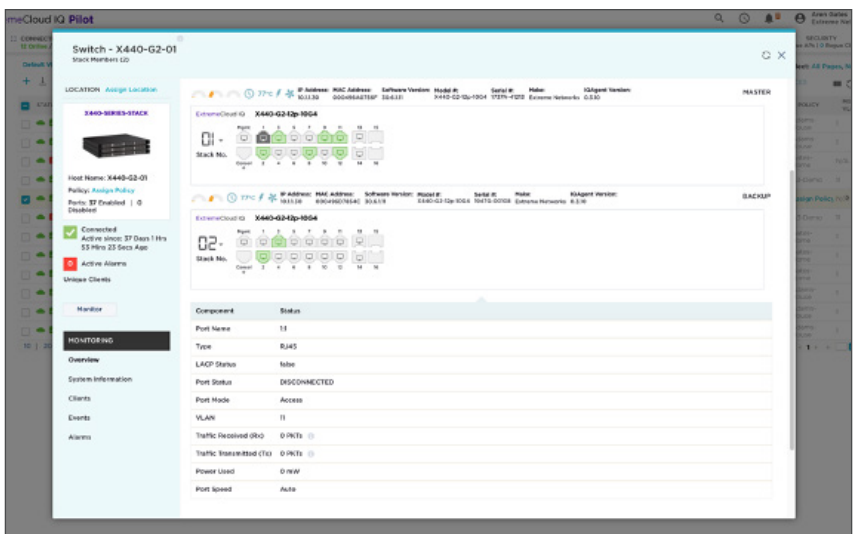
Using innovative machine learning and artificial intelligence technologies, ExtremeCloud IQ analyzes and interprets millions of network and user data points daily, from the network edge to the data center, to power actionable business and IT insights, and deliver new levels of network automation and intelligence.





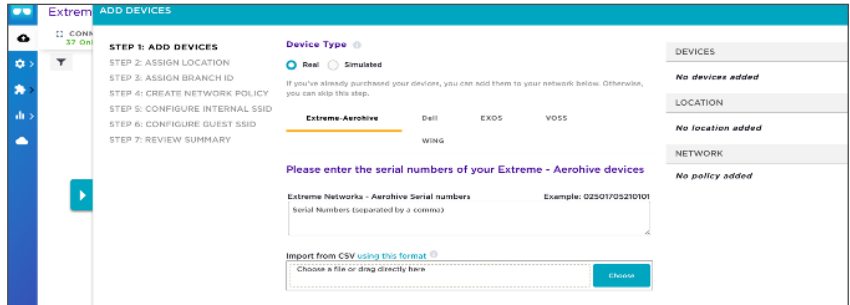
#### 4. Device 360

Device 360 leverages Extreme's true microservices cloud architecture and native Machine Learning capabilities to collect, process, and analyze vast amounts of device generated data and then distills it down to consumable and actionable insights for IT.



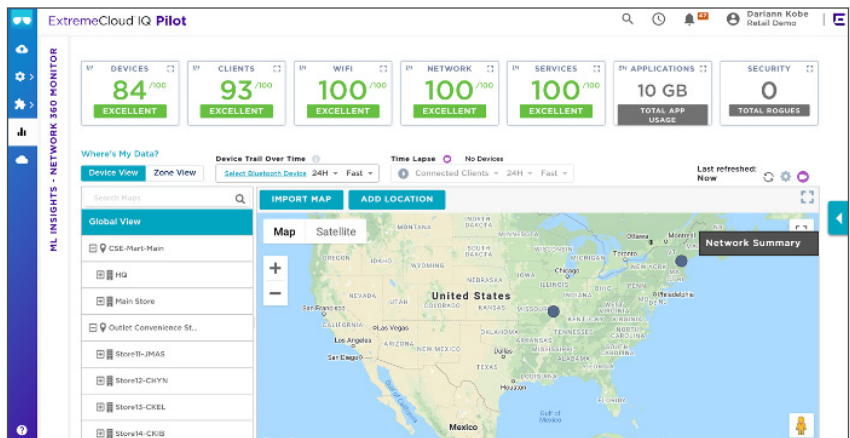
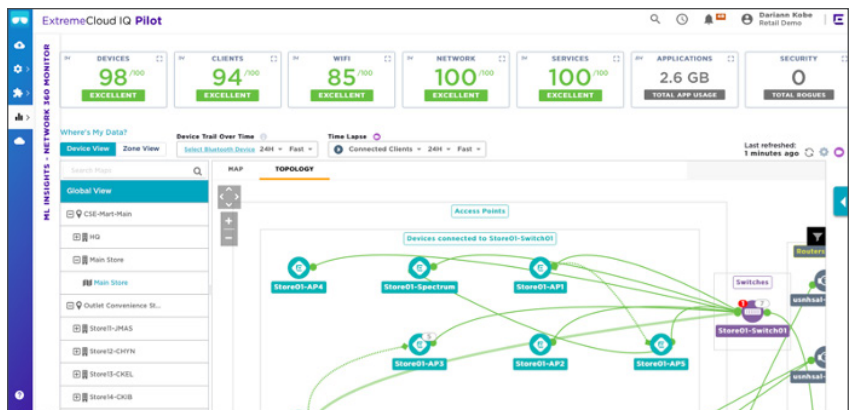
## 5. Zero Touch Onboarding/Provisioning

During deployment, ExtremeCloud IQ enables centralized configuration and onboarding of the policies and devices for all or part of the network. After entering serial numbers into the cloud, network devices only need to be plugged in (at central or remote sites) and then each will automatically discover, download, and install configurations. This means that a network administrator does not need to travel out to all sites to get the network configured and up and running.



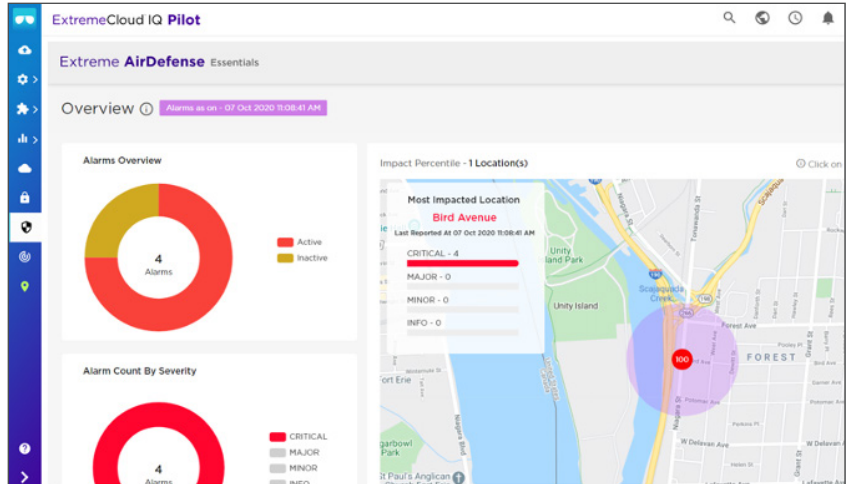
## 6. Ongoing Onboarding, Configuration, Deployment, Visibility, Troubleshooting, Analytics From Anywhere

Arguably the greatest benefit of ExtremeCloud IQ is its simplicity, due to the ability to centrally manage unified wired and wireless networks. Once deployed, network administrators can easily monitor, troubleshoot, and update the network for central and remote locations alike.



## 7. Addition of Extreme Applications in Single Platform

ExtremeCloud IQ Essentials integrates four enterprise service applications into its Pilot subscription license, allowing any organization to receive access to all enterprise network services without the complexity of integrating multiple systems, tying separate platforms, no additional licenses, no separate database and most importantly, no additional cost.



## 8. Unlimited Data Horizon

ExtremeCloud IQ offers the most extensive retention of data analytics in the industry. Customers can access an unlimited data horizon, meaning their entire data set is available for the full duration of licensed service. This means IT administrators and business stakeholders alike can make more intelligent and informed networking decisions based on a larger data perspective. Eleven 9's (99.999999999%) data durability to ensure you never lose your data.

SELECT THE DATA RETENTION FOR YOUR EXTREMECLOUD IQ ACCOUNT

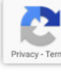
UNLIMITED <sup>?</sup>

90 DAYS <sup>?</sup>

PLEASE SEND A COPY OF THIS REGISTRATION TO:

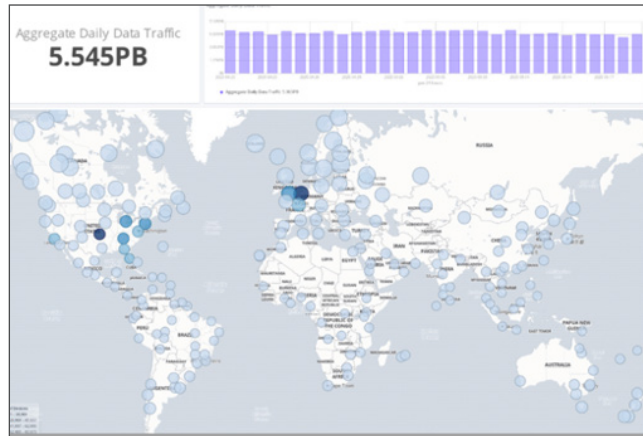
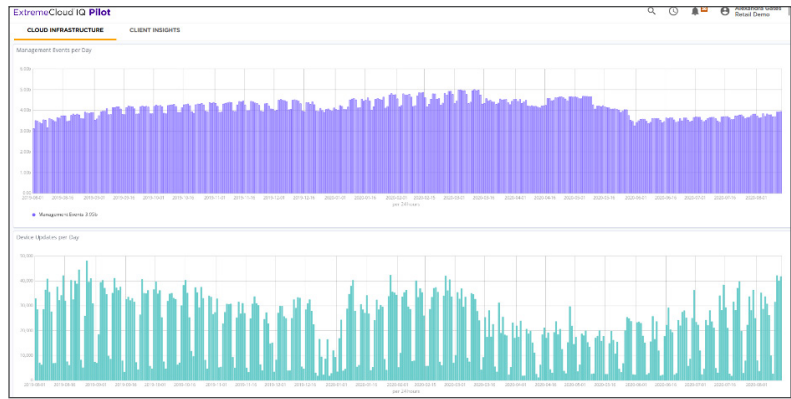
mistermultipath@gmail.com

I ACCEPT THE [CLOUD TERMS OF SERVICE](#), [EVALUATION AGREEMENT](#), AND [DATA PRIVACY AND PROTECTION](#).



## 9. Big Data

ExtremeCloud IQ currently ingests telemetry from over 5 petabytes of traffic every day from customer networks. To explain what that means, one petabyte of data is equal to 13.3 years of HD video. Therefore, every day, ExtremeCloud IQ analyzes health and behavioral patterns of the data equivalent of 66 years of HD video. Data science and machine learning algorithms are applied to such large datasets to drive accurate and high-performance data insights within the system.



## 10. Security

Extreme is the first major cloud-networking vendor to attain ISO/IEC 27001 certification for its Information Security Management Systems (ISMS) with ExtremeCloud IQ. This certification sits on top of the standard cloud security procedures put in place by the major cloud infrastructure vendors in the market: Google, Amazon, Microsoft, etc. These include business continuity and disaster recovery processes, comprehensive controls, and facility monitoring. Extreme takes additional measures to secure cloud-based applications, including firewalling, continuous threat monitoring, DDOS prevention, daily backup, penetration testing, DevOps activity audits, and much more.



Please visit our [ROI calculator](#) to assess the full business value of moving to Extreme's cloud driven networking platform.