

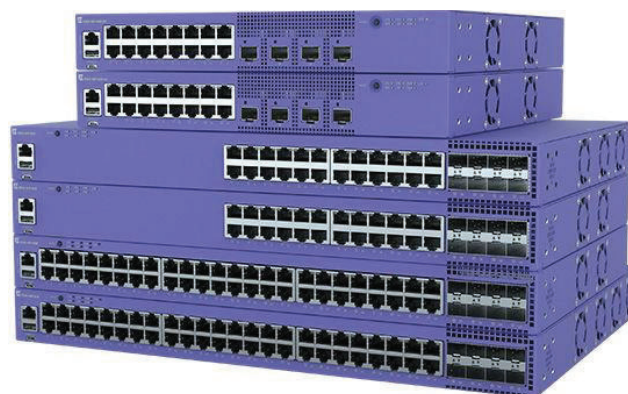
# 5320シリーズ

## ハイライト

- ExtremeCloud™ IQとExtremeCloud IQ - Site Engineによる、直感的で一元管理されたクラウドスイッチング
- Extreme Fabric Connectによるファブリック対応運用で、シンプルでセキュアなネットワークプロビジョニングと自動化を実現
- ユニバーサルデュアルペルソナハードウェアによるオペレーティングシステム (OS) の選択

## 主なハードウェアの特徴

- 30W PoE (Power over Ethernet) に対応し、接続機器への給電が可能
- 4 x 10Gb SFP+ アップリンクポート (16ポートモデル) / 8 x 10Gb SFP+ アップリンクポート (24ポートおよび48ポートモデル)
- 16ポートモデルで最大35°Cの静音動作
- 拡張温度範囲スイッチモデル (0°C~60)
- 16ポートモデルではACまたはDC電源の選択が可能
- 1台あたり40Gb、最大8台までスタッキング可能
- セキュアなリンク暗号化のため、アクセスポートとアップリンクポートにMACsecを搭載
- ノンブロッキング・ワイヤースピード設計



## ユニバーサルエッジスイッチプラットフォーム

5320シリーズは、次世代のデジタルエンタープライズ向けに設計された、高性能で機能豊富なエッジスイッチファミリーです。16ポート、24ポート、48ポートのギガビットモデルが用意された5320は、スタック可能なユニバーサルハードウェアスイッチングプラットフォームで、エンドツーエンドのセキュアなネットワークセグメンテーションと高度なポリシー機能を提供します。5320は、Extreme NetworksのフラッグシップスイッチOSに対応し、さまざまなエッジ環境およびワイヤリングクローゼット環境に導入可能な、他に類を見ない柔軟なプラットフォームです。

## クラウドベースのネットワーク管理

5320は、ExtremeCloud IQとExtremeCloud IQ - Site Engineでスイッチの集中管理を行うことができ、有線/無線ネットワーク全体のユーザ、デバイス、アプリケーションを統合して表示できるため、効率的なインベントリ管理とネットワークポロジ管理が可能です。ExtremeCloud IQは、ゼロタッチプロビジョニングを可能にし、OSペルソナの選択だけでなく、新しい5320スイッチを迅速にオンラインにすることができます。

また、5320のオンボックス管理は、ウェブベースのGUIまたは汎用コマンドラインインターフェイス（CLI）を使用して手動で行うこともできます。

## イーサネットファブリックサービス

5320は、Fabric Engine実行時にはExtreme NetworksのFabric Connectを、Switch Engine実行時にはExtreme Networks のIP Fabricを含む、さまざまなイーサネットファブリックサービスをサポートします。また、レイヤ2またはレイヤ3のファブリックサービスに自動接続するためのFabric Attachもサポートしています。

Extreme NetworksのFabric ConnectとIP Fabricは、ネットワーク運用の自動化、ネットワークプロビジョニングの簡素化、セキュリティの強化を実現する仮想化ネットワークの構築を可能にするとともに、ネットワーク担当者やIT担当者の負担を軽減します。

## ユニバーサルハードウェアプラットフォーム

5320 にはデュアルペルソナ機能が搭載されており、OS を選択することができます。Switch Engine (EXOS) <sup>1</sup> またはFabric Engine (VOSS) <sup>2</sup> OS は、スイッチの起動時に選択することも、後で変更することもできます。選択時に、スイッチはそのOSの機能と性能を引き継ぎます。

5320のOS選択は、ExtremeCloud IQで自動化することも可能で、スイッチ起動時に希望のOSを自動的にロードし、リモートからOSの有効化を容易にします。

<sup>1</sup> Switch Engineは、バージョン31.6以降、すべてのユニバーサルスイッチプラットフォームにおけるExtremeXOS (EXOS) の新しい名称です。

<sup>2</sup> Fabric Engineは、バージョン8.6以降、すべてのユニバーサルスイッチプラットフォームにおけるVSPオペレーティングシステムソフトウェア (VOSS) の新しい名称です。

## パワーオーバーイーサネット (PoE)

5320の全モデルは、IEEE 802.3at準拠した30W PoEに対応します。これにより、5320はパワードエッジデバイスのニーズに対応し、電気配線や回路を追加する必要がなくなります。さらに、5320 PoEモデルは、より効率的で信頼性の高いパワードエッジデバイスの動作のための無停止型PoEと高速PoEをサポートしています。

## オーディオ・ビデオ・ブリッジング

5320 シリーズは、Switch Engine OSを実行している場合、IEEE 802.1 オーディオ・ビデオ・ブリッジング (AVB) <sup>1</sup> をサポートします。これにより、5320モデルは、イーサネット上で信頼性の高いリアルタイムのオーディオ/ビデオ伝送を実現し、今日の高精細でタイムセンシティブなマルチメディアストリームに必要なサービス品質を満たします。

<sup>1</sup> 拡張温度スイッチモデルは、初期リリースではこの機能をサポートしていません。

## 拡張温度動作

5320シリーズは、0°C~60°Cの拡張温度動作<sup>1</sup> をサポートする24ポートおよび48ポートのスイッチモデルを提供しています。48ポートスイッチモデルは、ファイバーポートと銅ポートの組み合わせにより、柔軟な導入ユースケースを実現します。両モデルとも、アップリンクやスタッキング用に4x10G SFP+を搭載しています。拡張温度スイッチモデルには固定電源が1つ付属し、オプションで外部冗長電源 (RPS) もサポートします。

<sup>1</sup> 拡張温度スイッチ・モデルはGAでSwitch Engineをサポートします。Fabric Engineは後のGAリリースでサポートを予定しています。

## サイレントオペレーション

5320の16ポートACおよびDC電源モデルは、35°Cまでのサイレントモード動作に対応しています。このため、これらのモデルは、教室、ホスピタリティ・スイート、店舗、その他ノイズに敏感な環境、特にワイヤリング・クローゼット以外の環境に適しています。

## External Interfaces

Switch Model	Interfaces
5320-16P-4XE	16 x 10/100/1000BASE-T 802.3at (30W) ports <ul style="list-style-type: none"> <li>• Full / Half-Duplex (autosensing)</li> <li>• MACsec-capable</li> </ul> 4 x 1/10Gb SFP+ uplink ports (includes 2 x Stacking ports) <ul style="list-style-type: none"> <li>• MACsec-capable</li> </ul> 1 x Serial console port (RJ-45) 1 x USB A ports for management or external USB flash 1 x USB Micro-B console port
5320-16P-4XE-DC	16 x 10/100/1000BASE-T 802.3at (30W) ports <ul style="list-style-type: none"> <li>• Full / Half-Duplex (autosensing)</li> <li>• MACsec-capable</li> </ul> 4 x 1/10Gb SFP+ uplink ports (includes 2 x Stacking ports) <ul style="list-style-type: none"> <li>• MACsec-capable</li> </ul> 1 x Serial console port (RJ-45) 1 x USB A ports for management or external USB flash 1 x USB Micro-B console port
5320-24T-8XE	24 x 10/100/1000BASE-T ports <ul style="list-style-type: none"> <li>• Full/Half-Duplex (autosensing)</li> <li>• MACsec-capable</li> </ul> 8 x 1/10Gb SFP+ uplink ports (includes 2 x Stacking ports) <ul style="list-style-type: none"> <li>• MACsec-capable</li> <li>• 100Mb operation supported on last 4 uplink ports</li> </ul> 1 x Serial console port (RJ-45) 1 x USB A ports for management or external USB flash 1 x USB Micro-B console port
5320-24P-8XE	24 x 10/100/1000BASE-T 802.3at (30W) ports <ul style="list-style-type: none"> <li>• Full / Half-Duplex (autosensing)</li> <li>• MACsec-capable</li> </ul> 8 x 1/10Gb SFP+ uplink ports (includes 2 x Stacking ports) <ul style="list-style-type: none"> <li>• MACsec-capable</li> <li>• 100Mb operation supported on last 4 uplink ports</li> </ul> 1 x Serial console port (RJ-45) 1 x USB A ports for management or external USB flash 1 x USB Micro-B console port
5320-48T-8XE	48 x 10/100/1000BASE-T ports <ul style="list-style-type: none"> <li>• Full/Half-Duplex (autosensing)</li> <li>• MACsec-capable</li> </ul> 8 x 1/10Gb SFP+ uplink ports (includes 2 x Stacking ports) <ul style="list-style-type: none"> <li>• MACsec-capable</li> <li>• 100Mb operation supported on last 4 uplink ports</li> </ul> 1 x Serial console port (RJ-45) 1 x USB A ports for management or external USB flash 1 x USB Micro-B console port

Switch Model	Interfaces
5320-48P-8XE	48 x 10/100/1000BASE-T 802.3at (30W) ports <ul style="list-style-type: none"> <li>• Full/Half-Duplex (autosensing)</li> <li>• MACsec-capable</li> </ul> 8 x 1/10Gb SFP+ uplink ports (includes 2 x Stacking ports) <ul style="list-style-type: none"> <li>• MACsec-capable</li> <li>• 100Mb operation supported on last 4 uplink ports</li> </ul> 1 x Serial console port (RJ-45) 1 x USB A ports for management or external USB flash 1 x USB Micro-B console port
5320-24T-4X-XT	24 x 10/100/1000BASE-T ports <ul style="list-style-type: none"> <li>• Full/Half-Duplex (autosensing)</li> </ul> 4 x 1/10Gb SFP+ uplink ports (includes 2 x Stacking ports) 1 x Serial console port (RJ-45) 1 x 10/100/1000BASE-T out-of-band management port 1 x USB A ports for management or external USB flash 1 x USB Micro-B console port 0°C to 60°C operating temperature range
5320-24T-24S-4XE-XT	24 x 10/100/1000BASE-T ports <ul style="list-style-type: none"> <li>• Full/Half-Duplex (autosensing)</li> <li>• MACsec-capable</li> </ul> 24 x 100Mb/1Gb SFP uplink ports <ul style="list-style-type: none"> <li>• MACsec-capable</li> </ul> 4 x 1/10Gb SFP+ uplink ports (includes 2 x Stacking ports) <ul style="list-style-type: none"> <li>• MACsec-capable</li> </ul> 1 x Serial console port (RJ-45) 1 x 10/100/1000BASE-T out-of-band management port 1 x USB A ports for management or external USB flash 1 x USB Micro-B console port 0°C to 60°C operating temperature range

## Performance and Scale

Switch Model	Max Active 10/100/1000Mb ports	Max Active 1Gb/10GbSFP/SFP+ ports*	Max Active 10Gb Stacking ports	Aggregated Switch Bandwidth	Max Frame Forwarding Rate
5320-16P-4XE	16	4	2	112Gbps	83.3Mpps
5320-16P-4XE-DC	16	4	2	112Gbps	83.3Mpps
5320-24T-8XE	24	8	2	208Gbps	154.8Mpps
5320-24P-8XE	24	8	2	208Gbps	154.8Mpps
5320-48T-8XE	48	8	2	256Gbps	190.5Mpps
5320-48P-8XE	48	8	2	256Gbps	190.5Mpps
5320-24T-4X-XT	24	4	2	208Gbps	154.8Mpps
5320-24T-24S-4XE-XT	24	24x100Mb/1Gb SFP 4x1Gb/10Gb SFP+	2	256Gbps	190.5Mpps

\* As of versions 32.6 of Switch Engine and 9.0 of Fabric Engine, the capable ports in all 5320 switches will support 10Gb without requiring a port upgrade license.

## Software Scaling Values

### Switch Engine

	5320-48P-8XE 5320-48T-8XE 5320-24T-24S-4XE-XT	5320-24P-8XE 5320-24T-8XE 5320-16P-4XE (AC & DC)	5320-24T-4X-XT
MAC Table	32,000	32,000	32,000
IPv4 ARP Table	16,000	16,000	4,000
IPv6 Neighbor Table	6,000	6,000	2,000
VLANs	4,094	4,094	4,094
IPv4 Route Table	12,000	8,000	1,000
IPv6 Route Table	6,000	4,000	500
IP Route Interfaces	1,533	509	509
Multicast (S,G,V)	6,000	6,000	1,500
VRF	1024	16 local-only	16 local-only
ACL, Ingress	8K	8K	2K
ACL, Egress	1K	512	512
Policy Profiles	63	63	63
Policy Profile Rules ACL/Traditional	4,024/1,976	4,024/1,976	952/440

### Fabric Engine

	5320-48P-8XE 5320-48T-8XE	5320-24P-8XE 5320-24T-8XE 5320-16P-4XE (AC & DC)
MAC Table (without Fabric enabled)	32,000	32,000
MAC Table (with Fabric enabled)	16,000	16,000
IPv4 ARP Table	15,000	8,000
IPv6 Neighbor Table	6,000	6,000
VLANs	4,059	4,059
IPv4 Route Table	12,000	8,000
IPv6 Route Table	6,000	4,000
IP Route Interfaces	248	248
Multicast (S,G,V)	4,000	2,000
VRF	24	1
ACL, Ingress	1,024	1,024
ACL, Egress	400	190

	5320-48P-8XE 5320-48T-8XE	5320-24P-8XE 5320-24T-8XE 5320-16P-4XE (AC & DC)
Max Fabric nodes	500	500
L2VSN	500	250
L3VSN	64	1

## Weights and Dimensions

Switch Model	Weight	Physical Dimensions
5320-16P-4XE	3.0 kg (6.6 lb.)	Height: 43.2 mm (1.7 in.) Width: 309.9 mm (12.2 in.) Depth: 299.7 mm (11.8 in.)
5320-16P-4XE-DC	3.0 kg (6.6 lb.)	
5320-24T-8XE	3.7 kg (8.2 lb.)	Height: 43.2 mm (1.7 in.) Width: 439.4 mm (17.3 in.) Depth: 279.4 mm (11.0 in.)
5320-24P-8XE	4.0 kg (8.8 lb.)	
5320-48T-8XE	4.2 kg (9.3 lb.)	Height: 43.2 mm (1.7 in.) Width: 439.4 mm (17.3 in.) Depth: 279.4 mm (11.0 in.)
5320-48P-8XE	5.0 kg (11.0 lb.)	
5320-24T-4X-XT	3.2 kg (7.1 lb.)	Height: 43.5 mm (1.7 in.) Width: 441.0 mm (17.3 in.) Depth: 253.8 mm (10.0 in.)
5320-24T-24S-4XE-XT	4.0 kg (8.8 lb.)	Height: 43.5 mm (1.7 in.) Width: 441.0 mm (17.3 in.) Depth: 253.8 mm (10.0 in.)

## Minimum/Maximum Power Consumption and Heat Dissipation

Switch Model	Minimum Power Consumption (W)	Minimum Heat Dissipation (BTU/hr)	Maximum Power Consumption (W)*	Maximum Heat Dissipation (BTU/hr)**
5320-16P-4XE	17	57	246	208
5320-16P-4XE-DC	20	67	260	256
5320-24T-8XE	18	60	50	171
5320-24P-8XE	21	70	480	375
5320-48T-8XE	25	85	64	217
5320-48P-8XE	30	104	924	629

Switch Model	Minimum Power Consumption (W)	Minimum Heat Dissipation (BTU/hr)	Maximum Power Consumption (W)*	Maximum Heat Dissipation (BTU/hr)**
5320-24T-4X-XT	14	35	49	119
5320-24T-24S-4XE-XT	25	96	87	328

\* Includes maximum PoE load (W) through the switch

\*\* Does not include PoE load heat dissipated through external electronic load

## 5320 Max PoE Power Budget

Switch Model	PoE Budget
5320-16P-4XE	185W
5320-16P-4XE-DC	185W
5320-24P-8XE	370W
5320-48P-8XE	740W

## 5320 Acoustic Noise

Switch Model	Bystander Sound Pressure (dB(A))	Declared Sound Power (Bels)
5320-16P-4XE	All ports link up with full traffic, 8 PoE ports	
	Fan off 0°C to 35°C (32°F to 95°F) 19.8 (35°C to 40°C)	Fan off 0°C to 35°C (32°F to 95°F) 2.94 (35°C to 40°C)
5320-16P-4XE-DC	All ports link up with full traffic, 8 PoE ports	
	Fan off 0°C to 35°C (32°F to 95°F) 19.0 (35°C to 40°C)	Fan off 0°C to 35°C (32°F to 95°F) 2.91 (35°C to 40°C)
5320-24T-8XE	All ports link up with full traffic, 0°C to 35°C (32°F to 95°F)	
	19.5	2.86
5320-24P-8XE	All ports link up with full traffic, 12 PoE ports, 0°C to 35°C (32°F to 95°F)	
	20.3	2.86
5320-48T-8XE	All ports link up with full traffic	
	20.8	2.90
5320-48P-8XE	All ports link up with full traffic, 50% PoE budget load, 0°C to 35°C (32°F to 95°F)	
	20.9	2.87

## Environmental

### Environmental Specifications

EN/ETSI 300 019-2-1 v2.1.2 - Class 1.2 Storage  
EN/ETSI 300 019-2-2 v2.1.2 - Class 2.3 Transportation  
EN/ETSI 300 019-2-3 v2.1.2 - Class 3.1e Operational  
EN/ETSI 300 753 (1997-10) - Acoustic Noise  
ASTM D3580 Random Vibration Unpackaged 1.5 G

### Environmental Compliance

EU RoHS - 2011/65/EU  
EU WEEE - 2012/19/EU  
EU REACH – Regulation (EC) No 1907/2006 Reporting  
China RoHS - SJ/T 11363-2006  
Taiwan RoHS - CNS 15663(2013.7)

### Environmental Operating Conditions

Temp: 0°C to 50°C (32°F to 122°F)  
Humidity: 5% to 95% relative humidity, non-condensing  
Altitude: 0 to 3,000 meters (9,850 feet)  
Shock (half sine) 300 m/s<sup>2</sup> (30 G), 11 ms, 3 axes, 6 shocks/axis  
Random vibration: 3 to 500 Hz at 1.5 G rms  
Accelerations: 3 Hz @ +10dB/Octave PSD, 10 Hz @ .006 PSD, 500 Hz @ .006 PSD

### Packaging and Storage Specifications

Temp: -40°C to 70°C (-40°F to 158°F)  
Humidity: 5% to 95% relative humidity, non-condensing  
Packaged Shock (half sine): 3 axes, 100 shocks each axis (+/-), 180 m/s<sup>2</sup> (18 G)  
Packaged Vibration: 5 Hz to 20 Hz @ .01 g<sup>2</sup>/Hz (PSD), 20 to 500 Hz @ -3 dB/Octave (PSD)  
Packaged Random Vibration: 5 Hz to 62 Hz, 5mm/s velocity, 62 Hz to 500 Hz, 2.0 m/s<sup>2</sup>, 5 sweeps of each axis (15 total), Sweep Rate = 1 Octave/min  
Packaged Drop: Height at 42 inches for product <10 kg, 13 drops including 6 surfaces, 3 edges and 4 corners

## Regulatory and Safety

### North American ITE

UL 60950-1  
UL/CuL 62368-1 Listed  
CSA 22.2 No. 60950-1 2nd edition 2014 (Canada)  
Complies with FCC 21CFR 1040.10 (U.S. Laser Safety)  
CDRH Letter of Approval (US FDA Approval)

### European ITE

EN 60950-1 2nd Edition  
EN 62368-1  
EN 60825-1 Class 1 (Lasers Safety)

2014/35/EU Low Voltage Directive

### International ITE

CB Report and Certificate per IEC 60950-1  
CB Report and Certificate IEC 62368-1  
AS/NZS 60950-1 (Australia/New Zealand)

## EMI/EMC Standards

### North American EMC for ITE

FCC CFR 47 Part 15 Class A (USA)  
ICES-003 Class A (Canada)

### European EMC Standards

EN 55032 Class A  
EN 55024  
EN 61000-3-2, 2014 (Harmonics)  
EN 61000-3-3 2013 (Flicker)  
EN 300 386 (EMC Telecommunications)  
2014/30/EU EMC Directive

### International EMC Certifications

CISPR 32, Class A (International Emissions)  
AS/NZS CISPR32  
CISPR 24 Class A (International Immunity)  
IEC 61000-4-2/EN 61000-4-2 Electrostatic Discharge, 8kV Contact, 15 kV Air, Criteria B  
IEC 61000-4-3/EN 61000-4-3 Radiated Immunity 10V/m, Criteria A  
IEC 61000-4-4/EN 61000-4-4 Transient Burst, 2 kV, Criteria B  
IEC 61000-4-5/EN 61000-4-5 Surge, 2 kV L-L, 2 kV L-G, Level 3, Criteria B  
IEC 61000-4-6 Conducted Immunity, 0.15-80 MHz, 10V/rms, 80%AM (1kHz), Criteria A  
IEC/EN 61000-4-11 Power Dips and Interruptions, >30%, 25 periods, Criteria C

### Country Specific

VCCI Class A (Japan Emissions)  
ACMA RCM (Australia Emissions)  
CCC Mark (China)  
KCC Mark, EMC Approval (Korea)  
BSMI (Taiwan)  
Anatel (Brazil)  
NoM (Mexico)  
EAC (Russia, Belarus, Kazakhstan)  
NRCS (South Africa)

### IEEE 802.3 Media Access Standards

IEEE 802.3ab 1000BASE-T  
IEEE 802.3at PoE  
IEEE 802.3ae 10GBASE-X  
IEEE 802.3az Energy Efficient Ethernet



## Ordering Notes

Customers ordering a 5320 Series switch receive the hardware switch along with Base software license, integrated power supply, fan module and rack-mount kit. Optical transceivers and power cords must be separately ordered. Premier and MACsec licenses must also be ordered separately.

## Base Software and Optional Premier License

The Base software included with each 5320 unit supports most available software features. Certain features, however, require a Premier License to operate:

For Switch Engine, a Premier License is required for:

- 5 or more OSPF interfaces
- PIM DM/PIM SSM
- Anycast RP (Rendezvous Point)
- MultiSource Discovery Protocol (MSDP)
- IS-IS/BGP4/MBGP
- GRE Tunneling
- Ethernet VPN (EVPN)

For Fabric Engine, a Premier License is required for:

- 5 or more OSPF active interfaces
- 3 or more BGP Peers
- Layer 3 Virtual Service Networks (L3 VSNs)\*

\* 5320 16- and 24-port models do not require a Premier License for the single L3 VSN supported in these models.

## Ordering Information

### 5320 Systems

Part Number	Product Name	Product Description
5320-16P-4XE	5320 16-port 30W PoE Switch w/AC Power	5320 Universal Switch with 16 x 10/100/1000BASE-T Full / Half-Duplex ports, 802.3at 30W PoE ports, 4 x 1/10Gb SFP+ uplink ports (includes 2 x Stacking ports @10Gb), 1 internal fixed AC PSU, fixed fan module (fan-off mode up to 35°C/95°F), 2-post rack-mount kit, Base software license.
5320-16P-4XE-DC	5320 16-port 30W PoE Switch w/DC Power	5320 Universal Switch with 16 x 10/100/1000BASE-T Full / Half-Duplex ports, 802.3at 30W PoE ports, 4 x 1/10Gb SFP+ uplink ports (includes 2 x Stacking ports @10Gb), 1 internal fixed DC PSU, fixed fan module (fan-off mode up to 35°C/95°F), 2-post rack-mount kit, Base software license.
5320-24T-8XE	5320 24-port Switch	5320 Universal Switch with 24 x 10/100/1000BASE-T Full / Half-Duplex ports, 8 x 1/10Gb SFP+ ports (includes 2 x Stacking ports @10Gb), 1 internal fixed AC PSU, fixed fan modules, 2-post rack-mount kit, Base software license.
5320-24P-8XE	5320 24-port 30W PoE Switch	5320 Universal Switch with 24 x 10/100/1000BASE-T Full / Half-Duplex ports, 802.3at 30W PoE ports, 8 x 1/10Gb SFP+ ports (includes 2 x Stacking ports @10Gb), 1 internal fixed AC PSU, fixed fan modules, 2-post rack-mount kit, Base software license.
5320-48T-8XE	5320 48-port Switch	5320 Universal Switch with 48 x 10/100/1000BASE-T Full / Half-Duplex ports, 8 x 1/10Gb SFP+ ports (includes 2 x Stacking ports @10Gb), 1 internal fixed AC PSU, fixed fan modules, 2-post rack-mount kit, Base software license.
5320-48P-8XE	5320 48-port 30W PoE Switch	5320 Universal Switch with 48 x 10/100/1000BASE-T Full / Half-Duplex ports, 802.3at 30W PoE ports, 8 x 1/10Gb SFP+ ports (includes 2 x Stacking ports @10Gb), 1 internal fixed AC PSU, fixed fan modules, 2-post rack-mount kit, Base software license.

### Extended Temperature Switches

Part Number	Product Name	Product Description
5320-24T-4X-XT	5320 24-port Extended Temperature Switch	5320 24-port Extended Temperature (0°C–60°C) switch with 24 x 10/100/1000BaseT ports, 4 x 1/10Gb SFP+ ports. Includes fans, 1 fixed AC PSU with option to add external redundant PSU. Note: This model does not support MACsec.
5320-24T-24S-4XE-XT	5320 48-port Extended Temperature Switch	5320 24-port Extended Temperature (0°C–60°C) switch with 24 x 10/100/1000BaseT ports, 24 x 100Mb/1Gb SFP ports, 4 x 1/10Gb SFP+ ports, MACsec capable. Includes fans, 1 fixed AC PSU with option to add external redundant PSU.

### Accessories

Part Number	Product Name	Product Description
XN-2P-RMKIT-006	2 Post Rack Mount Kit for 5320 24/48 port switches	Spare two post rack mount kit for 5320 Series 24 and 48 port switches. Includes brackets for front or mid-mount of chassis in a two-post rack.
XN-2P-RMKIT-007	2 Post Rack Mount Kit for 5320 16 port switches (2RU)	Spare two post rack mount kit for 5320 Series 16 port switches. Includes brackets for front or mid-mount of chassis in a two-post rack (2RU).
XN-2P-RMKIT-011	2 Post Rack Mount Kit for 5320 16 port switches (1RU)	Spare two post rack mount kit for 5320 Series 16 port switches. Includes brackets for front or mid-mount of chassis in a two-post rack (1RU).
XN-2P-RMKIT-008	2 Post Rack Mount Kit for 5320-XT switches	Spare two post rack mount kit for 5320 Series extended temperature switches. Includes brackets for front or mid-mount of chassis in a two-post rack.

Part Number	Product Name	Product Description
RPS-150W-XT	150W external redundant power supply for 5320 XT switches	150W external redundant power supply for 5320 XT switches, extended temperature. Includes RPS Cable. Single or Dual rack mount kit to be ordered separately.
XN-2P-RMKIT-003	Single RPS Mount	Rack mount kit to mount single RPS-150W-XT external redundant power supply
16572	Dual RPS Mount	Rack mount kit to mount two RPS-150W-XT external redundant power supplies, side by side
RPS-CBL-1M-2x7	Spare RPS Cable	Spare RPS Cable for use with RPS-150W-XT

## Licenses

Part Number	Product Name	Product Description
5000-PRMR-LIC-P	Premier License for 5000 Series	Perpetual Premier License for 5000 Series switches
5000-MACSEC-LIC-P	MACsec License for 5000 Series	Perpetual MACsec License for the 5000 Series switches
5320-10GUPG-4X-LIC-P <sup>1</sup>	4 x 10Gb upgrade for 5320	10Gb Port Upgrade License for 4 ports of 1G SFP. Can be used on 16-, 24-, and 48-port 5320 switch models.
5320-10GUPG-8X-LIC-P <sup>1</sup>	8 x 10Gb upgrade for 5320	10Gb Port Upgrade License for 8 ports <sup>2</sup> of 1Gb SFP. Can be used on 24- and 48-port 5320 switch models.

<sup>1</sup> As of versions 32.6 of Switch Engine and 9.0 of Fabric Engine, the capable ports in all 5320 switches support 10Gb without requiring a port upgrade license.

<sup>2</sup> When running Fabric Engine on 24- and 48-port 5320 models, 3 of the 8 uplink ports are blocked in support of Ethernet Fabric Connect (SPB) functionality.

## Optics/Transceivers

For a list of the optics and transceivers supported on the 5320 Series hardware, refer to our [Extreme Optics Compatibility Tool](#).

## Power Cords

Power cords are not included with the 5320 in support of our green initiatives but can be ordered separately.

## Warranty

All 5320 Series models are covered under Extreme's Universal LLW policy.

For warranty details, please visit our [Policies and Warranties page](#).

## Maintenance Services

Extreme's maintenance and support services are provided 100% by in-house engineering experts. We have a rate of over 90% first-person resolution, ensuring efficient operation of your business-essential network.

With 24x7x365 phone support, advanced parts replacement, and on-site support, we augment your staff with expert resources to help you mitigate critical network issues fast. Visit [Extreme Maintenance Services](#) for more information.



©2024 Extreme Networks, Inc. All rights reserved. Extreme Networks and the Extreme Networks logo are trademarks or registered trademarks of Extreme Networks, Inc. in the United States and/or other countries. All other names are the property of their respective owners. For additional information on Extreme

Networks Trademarks, see <https://www.extremenetworks.com/about-extreme-networks/company/legal/trademarks>. Specifications and product availability are subject to change without notice. 20may24