

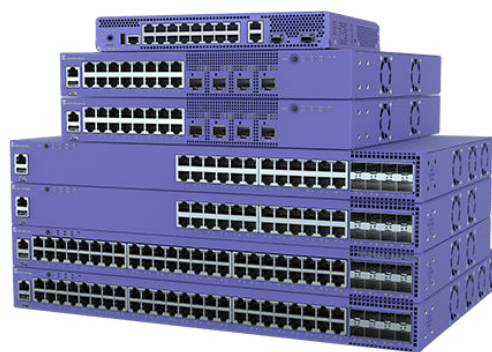
5320 Series

Highlights

- Manageable by Extreme Platform ONE™*, ExtremeCloud™ IQ or ExtremeCloud IQ Site Engine
- Fabric-enabled operations with Extreme Fabric for simplified and secure network provisioning and automation
- Choice of operating system (OS) with dual-persona Universal Hardware
- Reduced mean time to resolution with AI
- ExtremeCloud Universal ZTNA policy enforcement
- Automated and streamlined switch provisioning and day-to-day operations with cloud-based instant actions

Key Hardware Features

- 30W PoE (Power over Ethernet) support for powering connected devices
- 4 x 10Gb SFP+ uplink ports on 16-port models / 8 x 10Gb SFP+ uplink ports on 24- and 48-port models
- 2 x 10Gb SFP+ uplink ports and 2 x 10Gb (Power over Ethernet) ports that can be used as uplinks on multi-GbE for Fanless model**
- Silent operation at up to 35°C (95°F) on 16-port models and up to 45°C (113°F) for Fanless model**
- Extended temperature range switch models (0°C–60°C)
- Choice of AC or DC power option on 16-port models, except Fanless model** which only has the AC option
- 40Gb per unit stacking of up to eight switches
- Secure link encryption with MACsec across both access and uplink ports
- Non-blocking wire speed design



Universal Edge Switches

The 5320 Series is a family of high-performance, comprehensive edge switches designed for simplified operations through flexible cloud or on-premises management. Featuring 16, 24, and 48-port Gigabit models, the stackable 5320 provides secure connectivity for edge and wiring-closet environments with network segmentation and advanced policy capabilities. As a universal hardware solution, it is compatible with various Extreme switch operating systems to provide investment protection.

* Extreme Platform ONE™ General Availability (GA) in H2 2025

Network Management Flexibility

The 5320 Universal Switch series are managed by Extreme Platform ONE or ExtremeCloud IQ from the cloud or on-premises. Alternatively, 5320 on-box management can be done manually via a web-based GUI or generic command-line interface (CLI).

Extreme Platform ONE™

Extreme Platform ONE™ is an enterprise connectivity platform that integrates networking and security with AI into one powerful and radically simplified experience and licensing model. It supports NetOps, SecOps, and business teams with built-in automation and enables organizations to regain control, unlock innovation, and boost productivity through:

- One integrated experience that is easy to use.
- Automation through built-in AI that boosts productivity, reducing cycle time for many tasks from hours to minutes.
- Simplified licensing that makes the solution as easy to buy as it is to use.
- AI-assisted workflows for configuration, deployment, and management.
- Extreme Fabric and third-party switch visualization and management in cloud.
- Inventory management simplifies budgeting, planning and compliance.

Extended Temperature Operation

The 5320 Series offers 24- and 48-port switch models that support extended temperature operation of 0°C to 60°C. The 48-port switch model provides a combination of Fiber and Copper ports enabling flexible deployment use cases. Both switch models include 4x10G SFP+ for uplinks and/or stacking. The extended temperature switch models come with one fixed power supply and support an optional external Redundant Power Supply (RPS) as well.

Power Over Ethernet (PoE)

All 5320 models support 30W PoE that conforms with IEEE 802.3at. This enables the 5320 to address the needs of powered edge devices, while eliminating the need for additional electrical cabling and circuits. In addition, 5320 PoE models support perpetual and fast PoE for even more efficient and reliable powered edge device operation.

Audio Video Bridging

The 5320 Series supports IEEE 802.1 Audio Video Bridging (AVB)¹ when running Switch Engine OS. This allows 5320 models to deliver reliable, real-time audio/ video transmission over Ethernet, meeting the quality of service required for today's high-definition, time-sensitive multimedia streams.

¹ The extended temperature switch models do not support this feature in their initial release.

Silent Operation

16-port 5320 models operate¹ silently at temperatures up to 35°C (95°F). This makes these models ideal for noise-sensitive environments like classrooms, hospitality suites, or retail sites, especially outside of wiring closet environments.

¹ The 5320-16P-2MXT-2X is a fanless model and is silent up to 45°C (113°F).

Universal Hardware

The 5320 comes with a dual-persona capability, allowing you to choose your Operating System (OS). Either the Switch Engine (EXOS) or Fabric Engine (VOSS) OS can be selected at switch start-up or changed at a later stage. When selected, the switch assumes the features and capabilities of that OS. 5320 OS selection can also be automated with Extreme Platform ONE or ExtremeCloud IQ so that the desired OS can be automatically loaded at switch start-up, facilitating remote OS enablement.

Security

Extreme Universal hardware enables the extension and enforcement of Fabric and Universal ZTNA policies. Wherever users connect through the network, their access is secure and segmented. ExtremeCloud Universal ZTNA, which combines zero-trust network and application access in one solution, automatically configures devices to enforce security policy consistently. When used in concert with Extreme Fabric, Universal ZTNA becomes part of the fabric services that automate segmentation and allow the network to flex for efficiency and resiliency while keeping security policy consistent end-to-end.

Network Fabric

The 5320 series switches support Extreme's network fabric natively for network virtualization, automation, and network security. Extreme Fabric is the industry's most simple, resilient, and secure end-to-end, enterprise network fabric solution. Fabric automates discovery and onboarding of network and user devices. Its sub-second convergence reduces unplanned downtime and maintenance windows. Automated micro-segmentation and stealth topology enhance and automate network security across campus, data center, and branch. Fabric is included free with the purchase of the 5320, no additional licenses or controllers are required.

Instant Onboarding

5320 Series onboarding to the cloud is a hands-off operation using zero touch provisioning. Simply unpack the 5320 Series switch, connect it to the network, and it automatically finds its connection to the cloud, ready to be provisioned. The ExtremeCloud Companion mobile app makes onboarding even easier with on-site cloud set-up and switch troubleshooting capabilities.

Instant Port*

Instant Port automates adds, moves or changes across 5320 Series switch ports, eliminating the need for manual port configuration. The 5320 Series automatically detects the connected device and applies the correct port parameters. The result is significant time savings when adding or moving devices across the 5320 Series wired network. A simple cloud interface allows instant Port definitions of customer designated device types which can then be applied across a single switch, a stack or even all 5320 Series switches in the network.

*Supported via Switch Engine only

Instant Secure Port*

Instant Secure Port leverages ExtremeCloud Universal ZTNA (UZTNA) for authentication and zero-trust policy enforcement across the 5320 Series switch ports, while providing the same add, move, and change automation features of Instant Port. It simplifies 5320 Series security by using UZTNA's cloud-based security capabilities, including RADIUS authentication, unified visibility and reporting, as well as policy enforced locally on 5320 Series ports. In doing so, it delivers a consistent and frictionless security experience for any user or device connecting through the 5320 Series switch. (Note: ExtremeCloud UZTNA requires a separate license.)

Instant Stack*

Instant Stack simplifies cloud-based stack provisioning, enabling the entire switch stack to be set up through a single push-button operation. Real-world stack information, including each switch model and their stack order is captured and replicated in the cloud. Once set up, the entire stack is then ready to be cloud-provisioned.

External Interfaces

Switch Model	Interfaces
5320-16P-2MXT-2X ⁽¹⁾	16 x 10/100/1000BASE-T 802.3at (30W) ports <ul style="list-style-type: none"> • Full / Half-Duplex (autosensing) 2 x 1/2.5/5/10GBase-T uplink ports 2 x 10Gb SFP+ uplink ports Fanless model 1 x Serial console port (RJ-45) 1 x USB A ports for management or external USB flash 1 x USB-C console port
5320-16P-4XE	16 x 10/100/1000BASE-T 802.3at (30W) ports <ul style="list-style-type: none"> • Full / Half-Duplex (autosensing) • MACsec-capable 4 x 1/10Gb SFP+ uplink ports (includes 2 x Stacking ports) <ul style="list-style-type: none"> • MACsec-capable 1 x Serial console port (RJ-45) 1 x USB A ports for management or external USB flash 1 x USB Micro-B console port
5320-16P-4XE-DC	16 x 10/100/1000BASE-T 802.3at (30W) ports <ul style="list-style-type: none"> • Full / Half-Duplex (autosensing) • MACsec-capable 4 x 1/10Gb SFP+ uplink ports (includes 2 x Stacking ports) <ul style="list-style-type: none"> • MACsec-capable 1 x Serial console port (RJ-45) 1 x USB A ports for management or external USB flash 1 x USB Micro-B console port
5320-24T-8XE	24 x 10/100/1000BASE-T ports <ul style="list-style-type: none"> • Full/Half-Duplex (autosensing) • MACsec-capable 8 x 1/10Gb SFP+ uplink ports (includes 2 x Stacking ports) <ul style="list-style-type: none"> • MACsec-capable • 100Mb operation supported on last 4 uplink ports 1 x Serial console port (RJ-45) 1 x USB A ports for management or external USB flash 1 x USB Micro-B console port
5320-24P-8XE	24 x 10/100/1000BASE-T 802.3at (30W) ports <ul style="list-style-type: none"> • Full / Half-Duplex (autosensing) • MACsec-capable 8 x 1/10Gb SFP+ uplink ports (includes 2 x Stacking ports) <ul style="list-style-type: none"> • MACsec-capable • 100Mb operation supported on last 4 uplink ports 1 x Serial console port (RJ-45) 1 x USB A ports for management or external USB flash 1 x USB Micro-B console port

Switch Model	Interfaces
5320-48T-8XE	48 x 10/100/1000BASE-T ports <ul style="list-style-type: none"> Full/Half-Duplex (autosensing) MACsec-capable 8 x 1/10Gb SFP+ uplink ports (includes 2 x Stacking ports) <ul style="list-style-type: none"> MACsec-capable 100Mb operation supported on last 4 uplink ports 1 x Serial console port (RJ-45) 1 x USB A ports for management or external USB flash 1 x USB Micro-B console port
5320-48P-8XE	48 x 10/100/1000BASE-T 802.3at (30W) ports <ul style="list-style-type: none"> Full/Half-Duplex (autosensing) MACsec-capable 8 x 1/10Gb SFP+ uplink ports (includes 2 x Stacking ports) <ul style="list-style-type: none"> MACsec-capable 100Mb operation supported on last 4 uplink ports 1 x Serial console port (RJ-45) 1 x USB A ports for management or external USB flash 1 x USB Micro-B console port
5320-24T-4X-XT	24 x 10/100/1000BASE-T ports <ul style="list-style-type: none"> Full/Half-Duplex (autosensing) 4 x 1/10Gb SFP+ uplink ports (includes 2 x Stacking ports) 1 x Serial console port (RJ-45) 1 x 10/100/1000BASE-T out-of-band management port 1 x USB A ports for management or external USB flash 1 x USB Micro-B console port 0°C to 60°C operating temperature range
5320-24T-24S-4XE-XT	24 x 10/100/1000BASE-T ports <ul style="list-style-type: none"> Full/Half-Duplex (autosensing) MACsec-capable 24 x 100Mb/1Gb SFP uplink ports <ul style="list-style-type: none"> MACsec-capable 4 x 1/10Gb SFP+ uplink ports (includes 2 x Stacking ports) <ul style="list-style-type: none"> MACsec-capable 1 x Serial console port (RJ-45) 1 x 10/100/1000BASE-T out-of-band management port 1 x USB A ports for management or external USB flash 1 x USB Micro-B console port 0°C to 60°C operating temperature range

Note (1): Fabric Engine to be available at GA

Performance and Scale

Switch Model	Max Active 10/100/1000Mb ports	Max Active 1Gb/2.5Gb/5Gb/10Gb ports	Max Active 1Gb/10GbSFP/SFP+ ports*	Max Active 10Gb Stacking ports**	Aggregated Switch Bandwidth	Max Frame Forwarding Rate
5320-16P-2MXT-2X	16	2	2	2**	112Gbps	83.3Mpps
5320-16P-4XE	16	0	4	2	112Gbps	83.3Mpps
5320-16P-4XE-DC	16	0	4	2	112Gbps	83.3Mpps
5320-24T-8XE	24	0	8	2	208Gbps	154.8Mpps
5320-24P-8XE	24	0	8	2	208Gbps	154.8Mpps
5320-48T-8XE	48	0	8	2	256Gbps	190.5Mpps
5320-48P-8XE	48	0	8	2	256Gbps	190.5Mpps
5320-24T-4X-XT	24	0	4	2	128Gbps	95.2Mpps
5320-24T-24S-4XE-XT	24	0	24x100Mb/1Gb SFP 4x1Gb/10Gb SFP+	2	176Gbps	131Mpps

* As of versions 32.6 of Switch Engine and 9.0 of Fabric Engine, the capable ports in all 5320 switches will support 10Gb without requiring a port upgrade license.

** Will be supported in the future after the initial hardware release with the support of Switch Engine.

Software Scaling Values

Switch Engine

	5320-48P-8XE 5320-48T-8XE 5320-24T-24S-4XE-XT	5320-24P-8XE 5320-24T-8XE 5320-16P-4XE (AC & DC)	5320-24T-4X-XT
MAC Table	32,000	32,000	32,000
IPv4 ARP Table	16,000	16,000	4,000
IPv6 Neighbor Table	6,000	6,000	2,000
VLANs	4,094	4,094	4,094
IPv4 Route Table	12,000	8,000	1,000
IPv6 Route Table	6,000	4,000	500
IP Route Interfaces	1,533	509	509
Multicast (S,G,V)	6,000	6,000	1,500
VRF	1024	16 local-only	16 local-only
ACL, Ingress	8K	8K	2K
ACL, Egress	1K	512	512

	5320-48P-8XE 5320-48T-8XE 5320-24T-24S-4XE-XT	5320-24P-8XE 5320-24T-8XE 5320-16P-4XE (AC & DC)	5320-24T-4X-XT
Policy Profiles	63	63	63
Policy Profile Rules ACL/Traditional	4,024/1,976	4,024/1,976	952/440

Fabric Engine

	5320-48P-8XE 5320-48T-8XE	5320-24P-8XE 5320-24T-8XE 5320-16P-4XE (AC & DC)	5320-16P-2MXT-2X
MAC Table (without Fabric enabled)	32,000	32,000	32,000
MAC Table (with Fabric enabled)	16,000	16,000	16,000
IPv4 ARP Table	15,000	8,000	4,000
IPv6 Neighbor Table	6,000	6,000	4,000
VLANs	4,059	4,059	4,059
IPv4 Route Table	12,000	8,000	1,000
IPv6 Route Table	6,000	4,000	500
IP Route Interfaces	248	248	248
Multicast (S,G,V)	4,000	2,000	4,000
VRF	24	1	8
ACL, Ingress	1,024	1,024	512
ACL, Egress	400	190	190
Max Fabric nodes	500	500	300
L2VSN	500	250	128
L3VSN	64	1	8

Weights and Dimensions

Switch Model	Weight	Physical Dimensions
5320-16P-2MXT-2X	3.3 kg (7.3 lb.)	Height: 43.2 mm (1.7 in.) Width: 269.2 mm (10.6 in.) Depth: 236.2 mm (9.3 in.)
5320-16P-4XE	3.0 kg (6.6 lb.)	Height: 43.2 mm (1.7 in.) Width: 309.9 mm (12.2 in.) Depth: 299.7 mm (11.8 in.)
5320-16P-4XE-DC	3.0 kg (6.6 lb.)	
5320-24T-8XE	3.7 kg (8.2 lb.)	Height: 43.2 mm (1.7 in.) Width: 439.4 mm (17.3 in.) Depth: 279.4 mm (11.0 in.)
5320-24P-8XE	4.0 kg (8.8 lb.)	

Switch Model	Weight	Physical Dimensions
5320-48T-8XE	4.2 kg (9.3 lb.)	Height: 43.2 mm (1.7 in.) Width: 439.4 mm (17.3 in.) Depth: 279.4 mm (11.0 in.)
5320-48P-8XE	5.0 kg (11.0 lb.)	Height: 43.2 mm (1.7 in.) Width: 439.4 mm (17.3 in.) Depth: 330.20 mm (13.0 in.)
5320-24T-4X-XT	3.2 kg (7.1 lb.)	Height: 43.5 mm (1.7 in.) Width: 441.0 mm (17.3 in.) Depth: 253.8 mm (10.0 in.)
5320-24T-24S-4XE-XT	4.0 kg (8.8 lb.)	Height: 43.5 mm (1.7 in.) Width: 441.0 mm (17.3 in.) Depth: 253.8 mm (10.0 in.)

Minimum/Maximum Power Consumption and Heat Dissipation

Switch Model	Minimum Power Consumption (W)	Minimum Heat Dissipation (BTU/hr)	Maximum Power Consumption (W)*	Maximum Heat Dissipation (BTU/hr)**
5320-16P-4XE	17	57	246	208
5320-16P-4XE-DC	20	67	260	256
5320-16P-2MXT-2X	12.5	43	218	75
5320-24T-8XE	18	60	50	171
5320-24P-8XE	21	70	480	375
5320-48T-8XE	25	85	64	217
5320-48P-8XE	30	104	924	629
5320-24T-4X-XT	14	35	49	119
5320-24T-24S-4XE-XT	25	96	87	328

* Includes maximum PoE load (W) through the switch

** Does not include PoE load heat dissipated through external electronic load

5320 Max PoE Power Budget

Switch Model	PoE Budget
5320-16P-4XE	185W
5320-16P-4XE-DC	185W
5320-16P-2MXT-2X	180W
5320-24P-8XE	370W
5320-48P-8XE	740W

5320 Acoustic Noise

Switch Model	Bystander Sound Pressure (dB(A))	Declared Sound Power (Bels)
5320-16P-2MXT-2X	N/A (Fanless Model)	
5320-16P-4XE	All ports link up with full traffic, 8 PoE ports	
	Fan off 0°C to 35°C (32°F to 95°F) 19.8 (35°C to 40°C)	Fan off 0°C to 35°C (32°F to 95°F) 2.94 (35°C to 40°C)
5320-16P-4XE-DC	All ports link up with full traffic, 8 PoE ports	
	Fan off 0°C to 35°C (32°F to 95°F) 19.0 (35°C to 40°C)	Fan off 0°C to 35°C (32°F to 95°F) 2.91 (35°C to 40°C)
5320-24T-8XE	All ports link up with full traffic, 0°C to 35°C (32°F to 95°F)	
	19.5	2.86
5320-24P-8XE	All ports link up with full traffic, 12 PoE ports, 0°C to 35°C (32°F to 95°F)	
	20.3	2.86
5320-48T-8XE	All ports link up with full traffic	
	20.8	2.90
5320-48P-8XE	All ports link up with full traffic, 50% PoE budget load, 0°C to 35°C (32°F to 95°F)	
	20.9	2.87

Redundant Power Supply (RPS) Model	Bystander Sound Pressure (dB(A))	Declared Sound Power (Bels)
RPS-150W-XT	65	7.59

Environmental

Environmental Specifications

EN/ETSI 300 019-2-1 v2.1.2 - Class 1.2 Storage

EN/ETSI 300 019-2-2 v2.1.2 - Class 2.3 Transportation

EN/ETSI 300 019-2-3 v2.1.2 - Class 3.1e Operational

EN/ETSI 300 753 (1997-10) - Acoustic Noise

ASTM D3580 Random Vibration Unpackaged 1.5 G

Environmental Compliance

EU RoHS - 2011/65/EU

EU WEEE - 2012/19/EU

EU REACH – Regulation (EC) No 1907/2006 Reporting

China RoHS - SJ/T 11363-2006

Taiwan RoHS - CNS 15663(2013.7)

Environmental Operating Conditions

Temp: 0°C to 50°C (32°F to 122°F)

Temp: 0°C to 60°C (32°F to 140°F) for extended temperature models

Temp: 0°C to 45°C (32°F to 113°F) for 5320-16P-2MXT-2X

Humidity: 5% to 95% relative humidity, non-condensing

Altitude: 0 to 3,000 meters (9,850 feet)

Shock (half sine) 300 m/s² (30 G), 11 ms, 3 axes, 6 shocks/axis

Random vibration: 3 to 500 Hz at 1.5 G rms

Accelerations: 3 Hz @ +10dB/Octave PSD, 10 Hz @.006 PSD, 500 Hz @.006 PSD

Packaging and Storage Specifications

Temp: -40°C to 70°C (-40°F to 158°F)

Humidity: 5% to 95% relative humidity, non-condensing

Packaged Shock (half sine): 3 axes, 100 shocks each axis (+/-), 180 m/s² (18 G)

Packaged Vibration: 5 Hz to 20 Hz @ .01 g²/Hz (PSD), 20 to 500 Hz @-3 dB/Octave (PSD)

Packaged Random Vibration: 5 Hz to 62 Hz, 5mm/s velocity, 62 Hz to 500 Hz, 2.0 m/s², 5 sweeps of each axis (15 total), Sweep Rate = 1 Octave/min

Packaged Drop: Height at 42 inches for product <10 kg, 13 drops including 6 surfaces, 3 edges and 4 corners

Regulatory and Safety

North American ITE

UL 60950-1

UL/CuL 62368-1 Listed

CSA 22.2 No. 60950-1 2nd edition 2014 (Canada)

Complies with FCC 21CFR 1040.10 (U.S. Laser Safety)

CDRH Letter of Approval (US FDA Approval)

European ITE

EN 60950-1 2nd Edition

EN 62368-1

EN 60825-1 Class 1 (Lasers Safety)

2014/35/EU Low Voltage Directive

International ITE

CB Report and Certificate per IEC 60950-1

CB Report and Certificate IEC 62368-1

AS/NZS 60950-1 (Australia/New Zealand)

EMI/EMC Standards

North American EMC for ITE

FCC CFR 47 Part 15 Class A (USA)

ICES-003 Class A (Canada)

European EMC Standards

EN 55032 Class A

EN 55024

EN 61000-3-2,2014 (Harmonics)

EN 61000-3-3 2013 (Flicker)

EN 300 386 (EMC Telecommunications)

2014/30/EU EMC Directive

International EMC Certifications

CISPR 32, Class A (International Emissions)

AS/NZS CISPR32

CISPR 24 Class A (International Immunity)

IEC 61000-4-2/EN 61000-4-2 Electrostatic Discharge, 8kV Contact, 15 kV Air, Criteria B

IEC 61000-4-3/EN 61000-4-3 Radiated Immunity 10V/m, Criteria A

IEC 61000-4-4/EN 61000-4-4 Transient Burst, 2 kV, Criteria B

IEC 61000-4-5/EN 61000-4-5 Surge, 2 kV L-L, 2 kV L-G, Level 3, Criteria B

IEC 61000-4-6 Conducted Immunity, 0.15-80 MHz, 10V/rms, 80%AM (1kHz), Criteria A

IEC/EN 61000-4-11 Power Dips and Interruptions, >30%, 25 periods, Criteria C

Country Specific

VCCI Class A (Japan Emissions)

ACMA RCM (Australia Emissions)

CCC Mark (China)

KCC Mark, EMC Approval (Korea)

BSMI (Taiwan)

Anatel (Brazil)

NoM (Mexico)

EAC (Russia, Belarus, Kazakhstan)

NRCS (South Africa)

IEEE 802.3 Media Access Standards

IEEE 802.3ab 1000BASE-T

IEEE 802.3at PoE

IEEE 802.3ae 10GBASE-X

IEEE 802.3az Energy Efficient Ethernet

Ordering Notes

Customers ordering a 5320 Series switch receive the hardware switch along with Base software license, integrated power supply, fan module and rack-mount kit. Optical transceivers and power cords must be separately ordered. Premier and MACsec licenses must also be ordered separately.*

*Please note that the 5320-16P-2MXT-2X does not include a Rack Mount Kit. The mounting kit must be ordered separately for this model.

Base Software and Optional Premier License

The Base software included with each 5320 unit supports most available software features. Certain features, however, require a Premier License to operate:

For Switch Engine, a Premier License is required for:

- 5 or more OSPF interfaces
- PIM DM/PIM SSM
- Anycast RP (Rendezvous Point)
- MultiSource Discovery Protocol (MSDP)
- IS-IS/BGP4/MBGP
- GRE Tunneling
- Ethernet VPN (EVPN)

For Fabric Engine, a Premier License is required for:

- 5 or more OSPF active interfaces
- 3 or more BGP Peers
- Layer 3 Virtual Service Networks (L3 VSNs)*

* 5320 16- and 24-port models do not require a Premier License for the single L3 VSN supported in these models.

Ordering Information

5320 Systems

Part Number	Product Name	Product Description
5320-16P-2MXT-2X	5320 16-port 30W PoE Switch w/AC Power	5320 Universal Switch with 16 x 10/100/1000 BASE-T Full/Half-Duplex ports, 802.3at 30W PoE ports, 2x1G/2.5G/5G/10G Base-T uplink ports, 2 x 1/10Gb SFP+ uplink ports, 1 internal fixed AC PSU, Fanless, Rack Mount or Wall Mount kit ordered separately.
5320-16P-2MXT-2X-TAA	5320 16-port 30W PoE Switch w/AC Power	5320 Universal Switch with 16 x 10/100/1000 BASE-T Full/Half-Duplex ports, 802.3at 30W PoE ports, 2x1G/2.5G/5G/10G Base-T uplink ports, 2 x 1/10Gb SFP+ uplink ports, 1 internal fixed AC PSU, Fanless, Rack Mount or Wall Mount kit ordered separately. TAA Compliant
5320-16P-4XE	5320 16-port 30W PoE Switch w/AC Power	5320 Universal Switch with 16 x 10/100/1000BASE-T Full / Half-Duplex ports, 802.3at 30W PoE ports, 4 x 1/10Gb SFP+ uplink ports (includes 2 x Stacking ports @10Gb), 1 internal fixed AC PSU, fixed fan module (fan-off mode up to 35°C/95°F), 2-post rack-mount kit, Base software license.
5320-16P-4XE-DC	5320 16-port 30W PoE Switch w/DC Power	5320 Universal Switch with 16 x 10/100/1000BASE-T Full / Half-Duplex ports, 802.3at 30W PoE ports, 4 x 1/10Gb SFP+ uplink ports (includes 2 x Stacking ports @10Gb), 1 internal fixed DC PSU, fixed fan module (fan-off mode up to 35°C/95°F), 2-post rack-mount kit, Base software license.
5320-24T-8XE	5320 24-port Switch	5320 Universal Switch with 24 x 10/100/1000BASE-T Full / Half-Duplex ports, 8 x 1/10Gb SFP+ ports (includes 2 x Stacking ports @10Gb), 1 internal fixed AC PSU, fixed fan modules, 2-post rack-mount kit, Base software license.
5320-24P-8XE	5320 24-port 30W PoE Switch	5320 Universal Switch with 24 x 10/100/1000BASE-T Full / Half-Duplex ports, 802.3at 30W PoE ports, 8 x 1/10Gb SFP+ ports (includes 2 x Stacking ports @10Gb), 1 internal fixed AC PSU, fixed fan modules, 2-post rack-mount kit, Base software license.
5320-48T-8XE	5320 48-port Switch	5320 Universal Switch with 48 x 10/100/1000BASE-T Full / Half-Duplex ports, 8 x 1/10Gb SFP+ ports (includes 2 x Stacking ports @10Gb), 1 internal fixed AC PSU, fixed fan modules, 2-post rack-mount kit, Base software license.
5320-48P-8XE	5320 48-port 30W PoE Switch	5320 Universal Switch with 48 x 10/100/1000BASE-T Full / Half-Duplex ports, 802.3at 30W PoE ports, 8 x 1/10Gb SFP+ ports (includes 2 x Stacking ports @10Gb), 1 internal fixed AC PSU, fixed fan modules, 2-post rack-mount kit, Base software license.

Extended Temperature Switches

Part Number	Product Name	Product Description
5320-24T-4X-XT	5320 24-port Extended Temperature Switch	5320 24-port Extended Temperature (0°C–60°C) switch with 24 x 10/100/1000BaseT ports, 4 x 1/10Gb SFP+ ports. Includes fans, 1 fixed AC PSU with option to add external redundant PSU. Note: This model does not support MACsec.
5320-24T-24S-4XE-XT	5320 48-port Extended Temperature Switch	5320 24-port Extended Temperature (0°C–60°C) switch with 24 x 10/100/1000BaseT ports, 24 x 100Mb/1Gb SFP ports, 4 x 1/10Gb SFP+ ports, MACsec capable. Includes fans, 1 fixed AC PSU with option to add external redundant PSU.

Accessories

Part Number	Product Name	Product Description
XN-2P-RMKIT-006	2 Post Rack Mount Kit for 5320 24/48 port switches	Spare two post rack mount kit for 5320 Series 24 and 48 port switches. Includes brackets for front or mid-mount of chassis in a two-post rack.
XN-2P-RMKIT-007	2 Post Rack Mount Kit for 5320 16 port switches (2RU)	Spare two post rack mount kit for 5320 Series 16 port switches. Includes brackets for front or mid-mount of chassis in a two-post rack (2RU).
XN-2P-RMKIT-011	2 Post Rack Mount Kit for 5320 16 port switches (1RU)	Spare two post rack mount kit for 5320 Series 16 port switches. Includes brackets for front or mid-mount of chassis in a two-post rack (1RU).
XN-2P-RMKIT-008	2 Post Rack Mount Kit for 5320-XT switches	Spare two post rack mount kit for 5320 Series extended temperature switches. Includes brackets for front or mid-mount of chassis in a two-post rack.
RPS-150W-XT	150W external redundant power supply for 5320 XT switches	150W external redundant power supply for 5320 XT switches, extended temperature. Includes RPS Cable. Single or Dual rack mount kit to be ordered separately.
XN-2P-RMKIT-003	Single RPS Mount	Rack mount kit to mount single RPS-150W-XT external redundant power supply
16572	Dual RPS Mount	Rack mount kit to mount two RPS-150W-XT external redundant power supplies, side by side
RPS-CBL-1M-2x7	Spare RPS Cable	Spare RPS Cable for use with RPS-150W-XT
XN-WMKIT-002	Wall Mount for 5320-16P-2MXT-2X	Wall mount kit for 5320-16P-2MXT-2X
XN-2P-RMKIT-012	2P Rack Mount for 5320-16P-2MXT-2X	Two post rack mount kit for 5320-16P-2MXT-2X
XN-DIN-MT-002	DIN Rail Mount for 5320-16P-2MXT-2X	DIN Rail mount kit for 5320-16P-2MXT-2X
XN-UTMKIT-001	Under table mount kit for 5320-16P-2MXT-2X	Under Table mount kit for 5320-16P-2MXT-2X

Licenses

Part Number	Product Name	Product Description
5000-PRMR-LIC-P	Premier License for 5000 Series	Perpetual Premier License for 5000 Series switches
5000-MACSEC-LIC-P	MACsec License for 5000 Series	Perpetual MACsec License for the 5000 Series switches
5320-10GUPG-4X-LIC-P ¹	4 x 10Gb upgrade for 5320	10Gb Port Upgrade License for 4 ports of 1G SFP. Can be used on 16-, 24-, and 48-port 5320 switch models.
5320-10GUPG-8X-LIC-P ¹	8 x 10Gb upgrade for 5320	10Gb Port Upgrade License for 8 ports ² of 1Gb SFP. Can be used on 24- and 48-port 5320 switch models.

¹ As of versions 32.6 of Switch Engine and 9.0 of Fabric Engine, the capable ports in all 5320 switches support 10Gb without requiring a port upgrade license.

² When running Fabric Engine on 24- and 48-port 5320 models, 3 of the 8 uplink ports are blocked in support of Ethernet Fabric Connect (SPB) functionality.

Optics/Transceivers

For a list of the optics and transceivers supported on the 5320 Series hardware, refer to our [Extreme Optics Compatibility Tool](#).

Power Cords

Power cords are not included with the 5320 in support of our green initiatives but can be ordered separately.

Warranty

All 5320 Series models are covered under Extreme's Universal LLW policy. For warranty details, please visit our [Policies and Warranties page](#).

Maintenance Services

Extreme's maintenance and support services are provided 100% by in-house engineering experts. We have a rate of over 90% first-person resolution, ensuring efficient operation of your business-essential network.

With 24x7x365 phone support, advanced parts replacement, and on-site support, we augment your staff with expert resources to help you mitigate critical network issues fast. Visit [Extreme Maintenance Services](#) for more information.



©2025 Extreme Networks, Inc. All rights reserved. Extreme Networks and the Extreme Networks logo are trademarks or registered trademarks of Extreme Networks, Inc. in the United States and/or other countries. All other names are the property of their respective owners. For additional information on Extreme Networks Trademarks, see <https://www.extremenetworks.com/about-extreme-networks/company/legal/trademarks>. Specifications and product availability are subject to change without notice. 11jul25