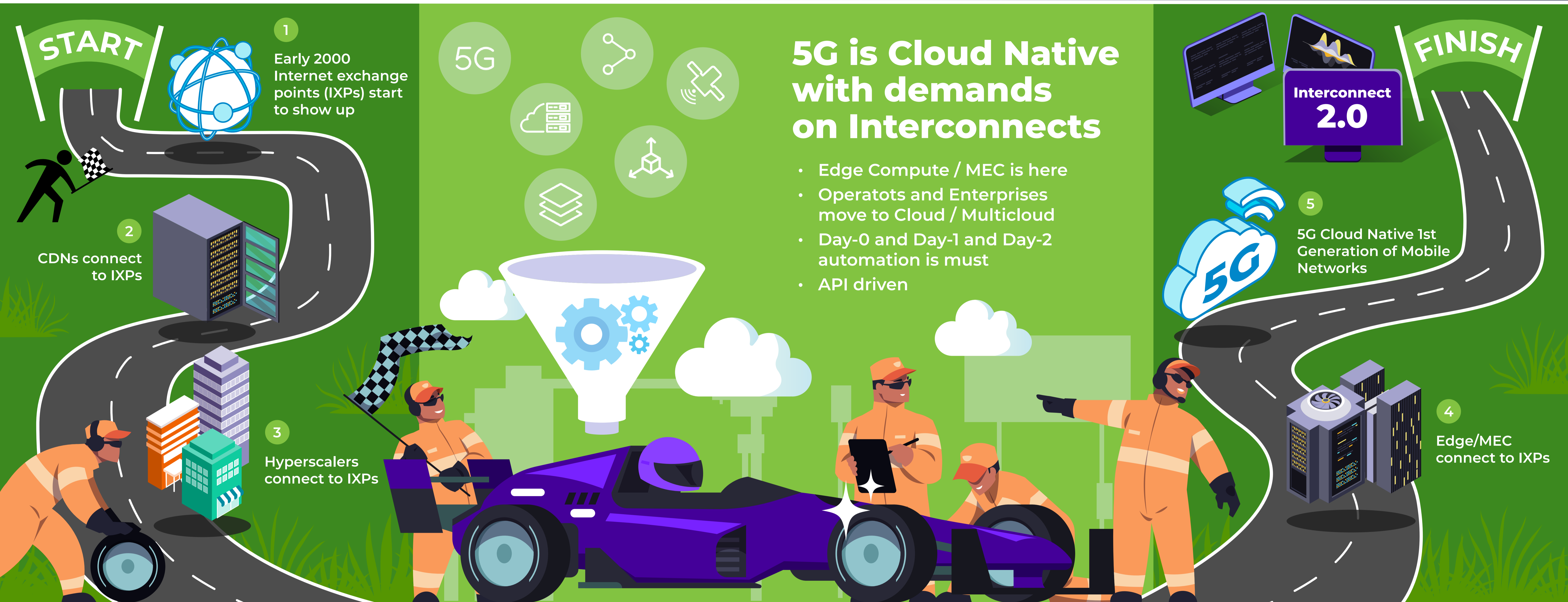


# Evolution of Moving from Peering to Interconnect



**Moving to Interconnect 2.0 is challenging and will not happen overnight.** While the rationale for embracing the new era of interconnects is clear, many factors are slowing the industry's movement into becoming the interconnects of the future. Despite this, the industry is moving toward cloud-native deployments with tightly integrated ecosystems incorporating APIs for orchestration and automation of services, enabling scalability and thus benefiting the interconnects.

